

Installation Guide

Multiverge



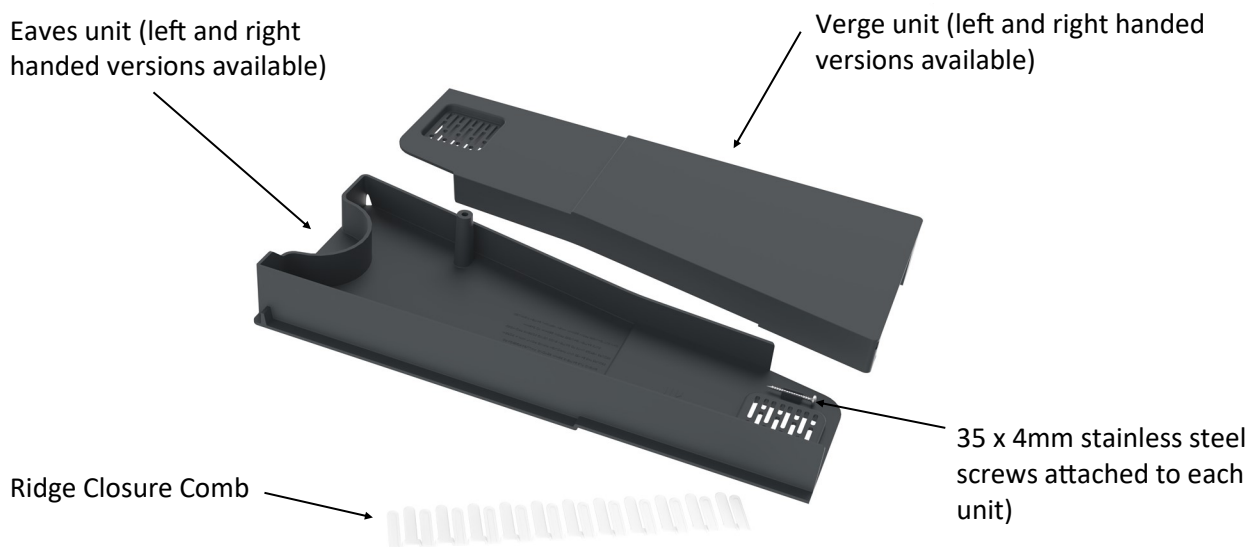

Wienerberger

Installation guide for Multiverge

The Sandtoft Multiverge system has been specially designed to suit most single lap large format concrete and clay roof tiles (suits batten gauges from 280 to 345mm).

The system is extremely quick and easy to fit and depending upon the particular tile, is either closely colour matched or coloured to complement the tiles.

Components



Compatibility

Multiverge is compatible with most single lap large format concrete and clay tiles, including the following Sandtoft tiles:

- Double Pantile
- Double Roman
- Calderdale Edge
- Dual Calderdale Edge
- TLE/Dual TLE
- Lindum
- Olympus
- Cassius
- Rivius

With additional preparation, the Multiverge can also fit several medium format pantile and profile tiles, including the following Sandtoft tiles:

- Standard Pattern
- Neo
- Shire Pantile

For medium format installation please go straight to **page 6**.



Installation guide for Multiverge

Colours



Dark Grey



Red Multi



Natural Red



Brown

Due to different computer monitors/calibrations the images shown may not be an accurate representation of the final products colour.

Standard Installation

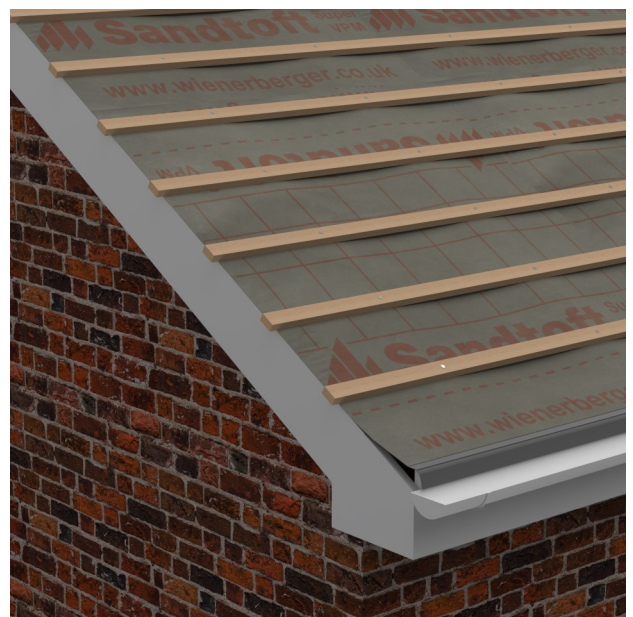
Before installation please note; The Sandtoft Multiverge system is not intended to be waterproof. Rainwater running off the roof at the verge will run through the verge units (particularly when used with flat tiles) and drip from the underside of the verge units. Installing each batten and eaves unit correctly will ensure the verge is sufficiently placed away from the gable wall to minimise any staining risks.

The use of a bargeboard with flat tiles will also help to minimise the risk of water staining on the gable wall.

1) Lay the underlay in the usual way, allowing a 25mm overhang at the verge. Set out the tile battens at the appropriate gauge for the tile.

Extend each batten 25mm beyond the outer edge of the wall or the bargeboard and fix. This dimension positions the verge units approximately 5mm off the wall or bargeboard.

Alternatively, install each batten flush with the outer edge of the wall or the bargeboard and install a 25mm thick vertical batten.

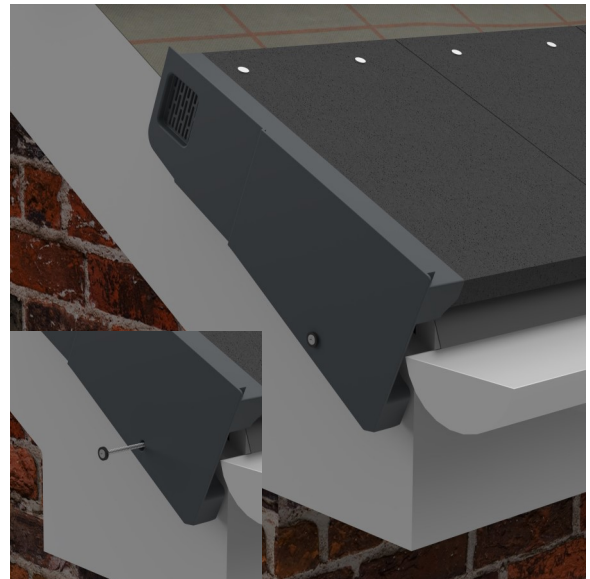


Installation guide for Multiverge

2) Position an eaves course tile at the verge with the correct overhang over the eaves and verge. Locate the eaves unit onto the tile as shown.

Securely fix the eaves unit to the wall or bargeboard through the fixing hole using a stainless steel screw no less than 60mm in length (screws - not supplied).

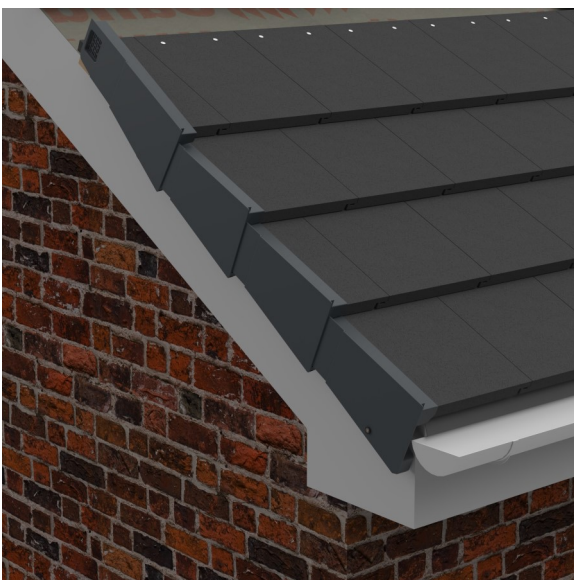
Screw caps can be used in addition to the fixing if it is desired that the fixing be hidden (not supplied).



3) Screw through an appropriate fixing hole into the centre of the tile batten using a 35 x 4mm stainless steel screw (supplied in the verge unit).



4) The verge unit is versatile and can be installed in several ways, pictured examples are shown below:

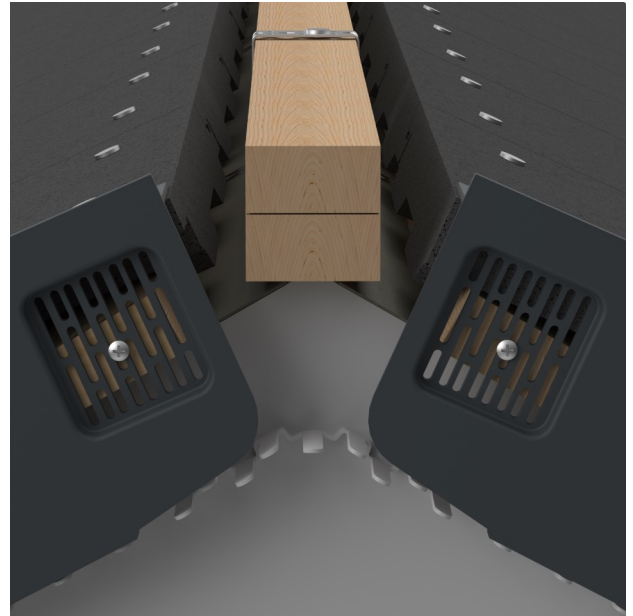


Installation guide for Multiverge

With the verge unit in place screw through an appropriate fixing hole into the centre of the batten. Follow this procedure for each tile course up to the ridge. Fix all verge tiles. At the right hand verge, tiles can also be secured using tile clips if required.

5) Before inserting the top course verge units into their final positions locate the ridge closure comb onto the lower edges of each verge unit as shown. This will close the gap between the verge units and the wall. If you are using a plastic ridge end cap the ridge closure comb is not required.

For some tile profiles and roof pitches it may be necessary to cut the top course verge units to form a mitre either side of the ridge apex.



6) Start/terminate the ridge with a block end ridge tile or plastic ridge cap to cover the top of the verge units.



Installation guide for Multiverge

Medium Format Installation

1) Lay the underlay in the usual way, allowing a 25mm overhang at the verge. Set out the tile battens at the appropriate gauge for the tile.

Install each batten flush with the outer edge of the wall or the bargeboard and fix. This dimension positions the verge units approximately 5mm off the wall or bargeboard.



2) Fix a vertical batten of 38 x 25mm along the edge of the tile batten into each batten end using a screw with a minimum length of 45mm (not supplied). Ensure that you fit the batten the correct way round to ensure the total dimension between the wall and the edge of your batten is 25mm.



3) Position an eaves course tile at the verge with the correct overhang over the eaves and verge. Locate the eaves unit onto the tile as shown.

Securely fix the eaves unit to the wall or bargeboard through the fixing hole using a stainless steel screw no less than 60mm in length (screws - not supplied).

Screw caps can be used in addition to the fixing if it is desired that the fixing be hidden (not supplied).



Installation guide for Multiverge

4) Whilst installation methods displayed in the standard installation can still be used, it is recommended that when used with Medium Format tiles, the verge unit is slid on prior to the tile.



The additional work required to fit medium format tiles has been completed, please refer to step 5 of the standard installation to continue.



Issue Date: 25/04/2022

Sandtoft Technical Support

T 0844 9395 999

E sandtofttechnical@wienerberger.com

Sandtoft Roof Tiles

Belton Rd
Sandtoft
Doncaster
DN8 5SY

T 0844 9395 900

F 0844 9395 950

sandtoftorders@wienerberger.com

www.wienerberger.com



Wienerberger