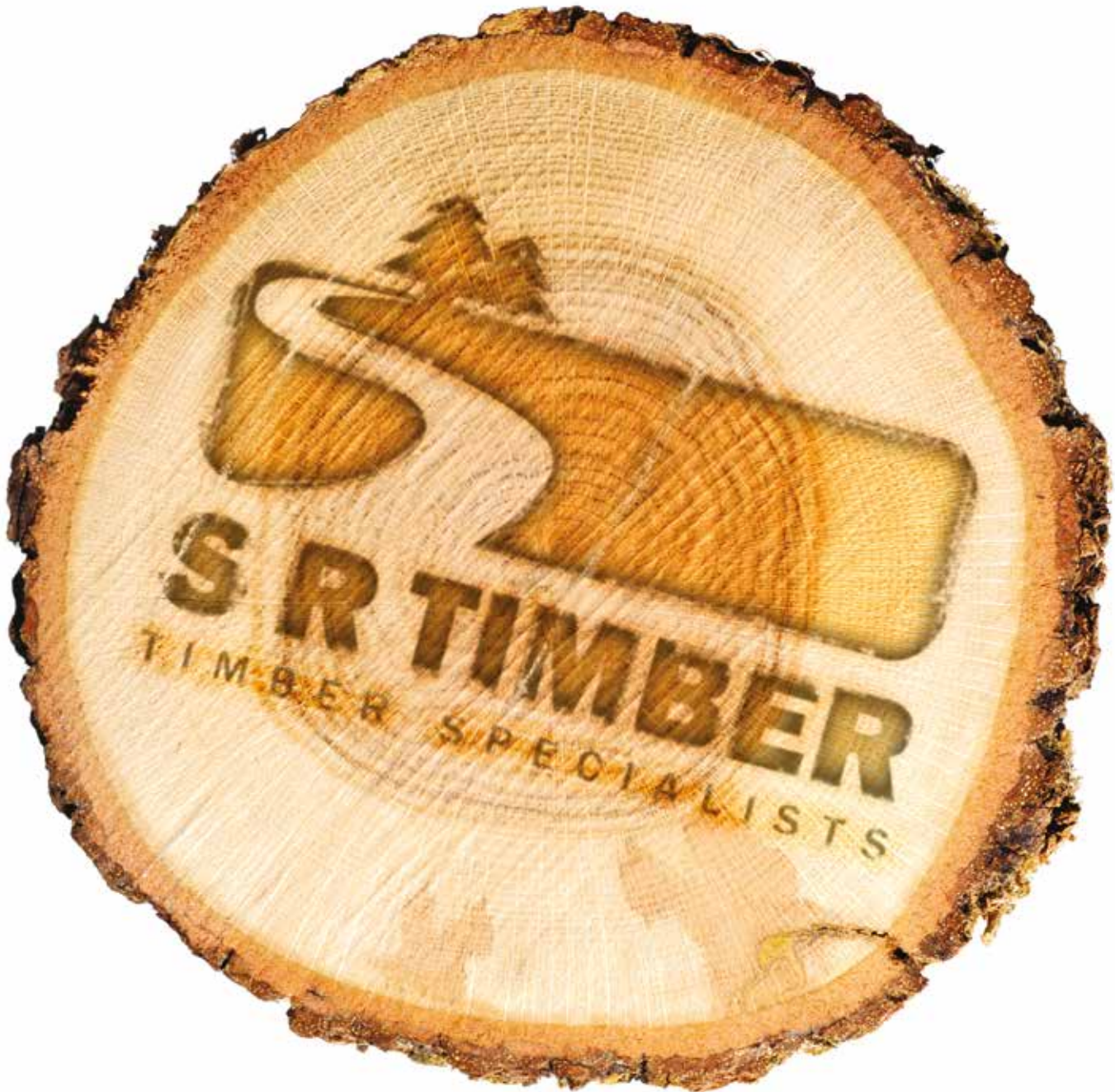


The Timber Specialists



The Timber Specialists

SR Timber is a leading supplier of specialist timber construction materials in the UK.



For the highest quality timber products SR Timber can deliver.

Fully certified and approved

Being very conscious of environmental issues all of our products are produced from slow-grown timber which are supplied either FSC® or PEFC™ fully certified. This in turn guarantees you that your timber comes from sustainable sources and ensures you have the very best material for any project.

Giving you total confidence – underpinned by our 60-year treatment service life warranty.

Our fully graded Gold roof batten is stamped to BS5534:2014 + A2:2018, and is certified by CATG and recognized by controlling bodies, local authorities and home warranty providers such as the NHBC. So when only the very best roofing timber will do, there is only one real choice.

In addition we are active members of a number of key trade associations including; NFRC and TTF. Through these connections we make a major contribution to the usage, management and sustainability of timber products in the construction industry.



Quality stock & consistent flow of availability

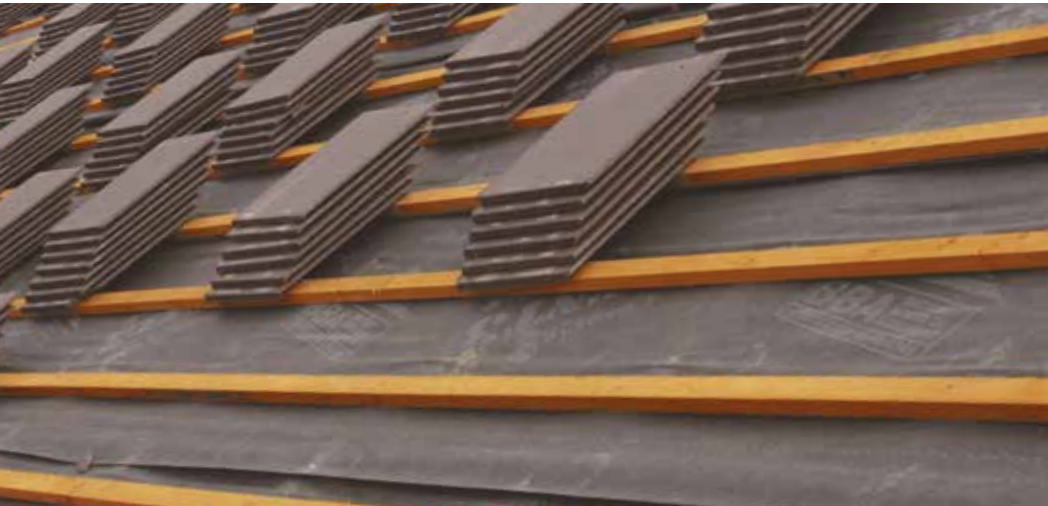


The SR Timber team has decades of experience in producing, supplying and installing timber construction products consisting of graded scaffold boards, cedar shingles, through to general carcassing timbers and fencing material.

This background in the industry means our knowledgeable staff have an expert understanding of the whole market and know what our customers need – a guaranteed supply of high quality timber materials.

With probably the largest roofing batten production facilities in Europe and contacts with other leading timber sawmills from across Scandinavia, Latvia and the Baltic states, to as far a field as Canada means we can deliver regular shipments to our holding terminals across the UK resulting in quality stock and consistent flow of availability.

SR Timber Vacsol PREMIUM GOLD®



The **GOLD** range is our highest grade of roofing batten.

Our GOLD roof battens are produced in our very own sawmill from the highest quality slow-grown sustainable timber.

The raw material is pre-graded prior to processing to enable an even higher finished grade of roofing batten that is NHBC, NFRC and TTF approved.

Battens are mechanically and visually piece graded by our own highly qualified staff to comply fully to BS 5534:2014 + A2:2018.

The grading process is also third party assessed and audited by CATG to ensure continued compliance to BS 5534:2014 + A2:2018.

They are bundled in packs of the same length, for simplicity and stock management, then spray stenciled for easy identification, as shown on the image here.

With zero percentage of timber wane all our GOLD battens are:

- Fully compliant with BS 8417:2011 (Preservation of Timber) and BS 5534:2014 + A2:2018 (Slating & Tiling for pitched roofs and vertical cladding code of practice)
- Manufactured full to size in both thickness and depth/width
- Available in both 25mm x 38mm and 25mm x 50mm profiles and lengths from 3.0m up to 5.4m, in normally 300mm increments
- Double vacuum treated (VAC-VAC) to give a protective envelope of treatment around the timber and correct penetration within.
- Supplied from either FSC® or PEFC™ fully certified or controlled resources
- Compliant to UKTR regulations
- Vascol Aqua preservative treated to BS 8417:2011
- Backed with a 60-year service life warranty against insect attack and wood rotting fungi (installed/used correctly above dpc level in buildings)

SeRiously good Timber



SR Timber IMPORTED Timber

Our **IMPORTED** quality softwood timber products have been used in the UK construction sector for many years.



- SR Timber "IMPORTED" products are manufactured at our own sawmill as well as carefully selected 3rd party production plants. Timber products should be protected whilst in store to prevent water saturation, this will prevent sagging or twisting of the material.
- SR Timber "IMPORTED" products are available in various lengths ranging from 2.4m up to 5.4m, in 300mm increments.
- Produced from imported spruce and fir (Whitewood) Abies Alba/Picea abies – WPCA or pine (Redwood) Pinus sylvestris – PNSY or combined/mixed species – WPPA, all supplied from either FSC® or PEFC™ fully certified or controlled wood resources. All "IMPORTED" products also meet all requirements within UKTR regulations.
- High pressure Tanalith E preservative treated to class 2, in accordance with recommendations in BS 8417:2011. With our standard 60 year service life warranty against insect attack and wood rotting fungi (when used correctly and installed above dpc level in buildings).



IMPORTED Spruce & Pine timber products include;

Traditional Timber Dimensions

19x38mm (¾"x 1½")	47x125mm (2"x5")	75x75mm (3"x3")
19x50mm (¾"x 2")	47x150mm (2"x6")	75x100mm (3"x4")
25x38mm (1"x 1½")	47x175mm (2"x7")	75x125mm (3"x5")
25x50mm (1"x 2")	47x200mm (2"x8")	75x150mm (3"x6")
38x38mm (1½"x 1½")	47x225mm (2"x9")	75x175mm (3"x7")
38x50mm (1½"x 2")	50x50mm (2"x2")	75x200mm (3"x8")
47x100mm (2"x4")	50x75mm (2"x3")	75x225mm (3"x9")

Speciality Timber Dimensions

6x25mm Counterbatten / PlasterBoard Lath
11x38mm Counterbatten
12x38mm Drip Batten
50x50mm Corner to Corner (Arris Rail)
50x75mm Corner to Corner (Arris Rail)
50x50mm Mopstick (Lead Roll)



SeRiously good Timber

Product Range

Cedar Shingles

Sustainable, Renewable & Contemporary



Cedar raw material

Standard Shingles

(random widths 75 - 325mm)
400mm (long) x 10mm (butt) x 2mm (tip)

Special Shingles

(random widths 75 - 325mm)
Perfections;
450mm (long) x 11mm (butt) x 3mm (tip)
Royals;
600mm (long) x 13mm (butt) x 3mm (tip)

Cedar Shingles are smooth sawn, tapered and random width wood tiles commonly used for domestic and commercial roofing, as well as a cladding for walls, stable roofs, summer houses and gazebo's. In addition to offering a high level of protection, they contribute significantly to the achievements of Zero Carbon Housing, providing an environmentally friendly, durable and lightweight solution that is weather resistant in exposed situations. Cedar Shingles can be fixed at a roof pitch as low as 14°, offering the end user a reliable form of roof covering as an alternative to felt or lead.

Western Red Cedar (WRC) comes from the west side of Canada and is renowned for its resistance to rot, as well as its attractive, deep red-brown colour. Western Red Cedar is classified as 'durable', offering excellent natural insulation properties with a value of K= 0.1067 W/M degrees C, even when untreated. When treated with Tanalith 'E' preservative and Tanalith 'M' clear preservative, Cedar Shingles have a life expectancy in excess of 50 years when fitted in line with our recommendations. Pre formed Hip + Ridge cappings are also available to compliment the roof design.

The colour of WRC can be variable, ranging from salmon-pink to chocolate-brown, gradually turning silvery-grey over time when exposed on a roof or as an exterior cladding. WRC is low in density, forming an excellent additional layer of insulation to a building, be that as a roof covering or as a wall-cladding, helping to boost the energy saving potential of any design.

Sustainability & Certification

Western Red Cedar Shingles meet all the requirements of the EUTR in terms of buying legally-sourced wood supplies, and is an environmentally friendly choice for building projects.

Cedar Shingles are the ultimate green building material, being truly sustainable

and renewable. Supplied from managed, responsible sources, shingles tend to be the by-product once the logs have been sawn into usable lengths. They are generally produced from material remaining after logs have been processed by commercial mills.

Our suppliers have a policy to re-plant three trees for every one harvested within one year, and to the exact species ratio of the trees that were harvested.

Work Qualities

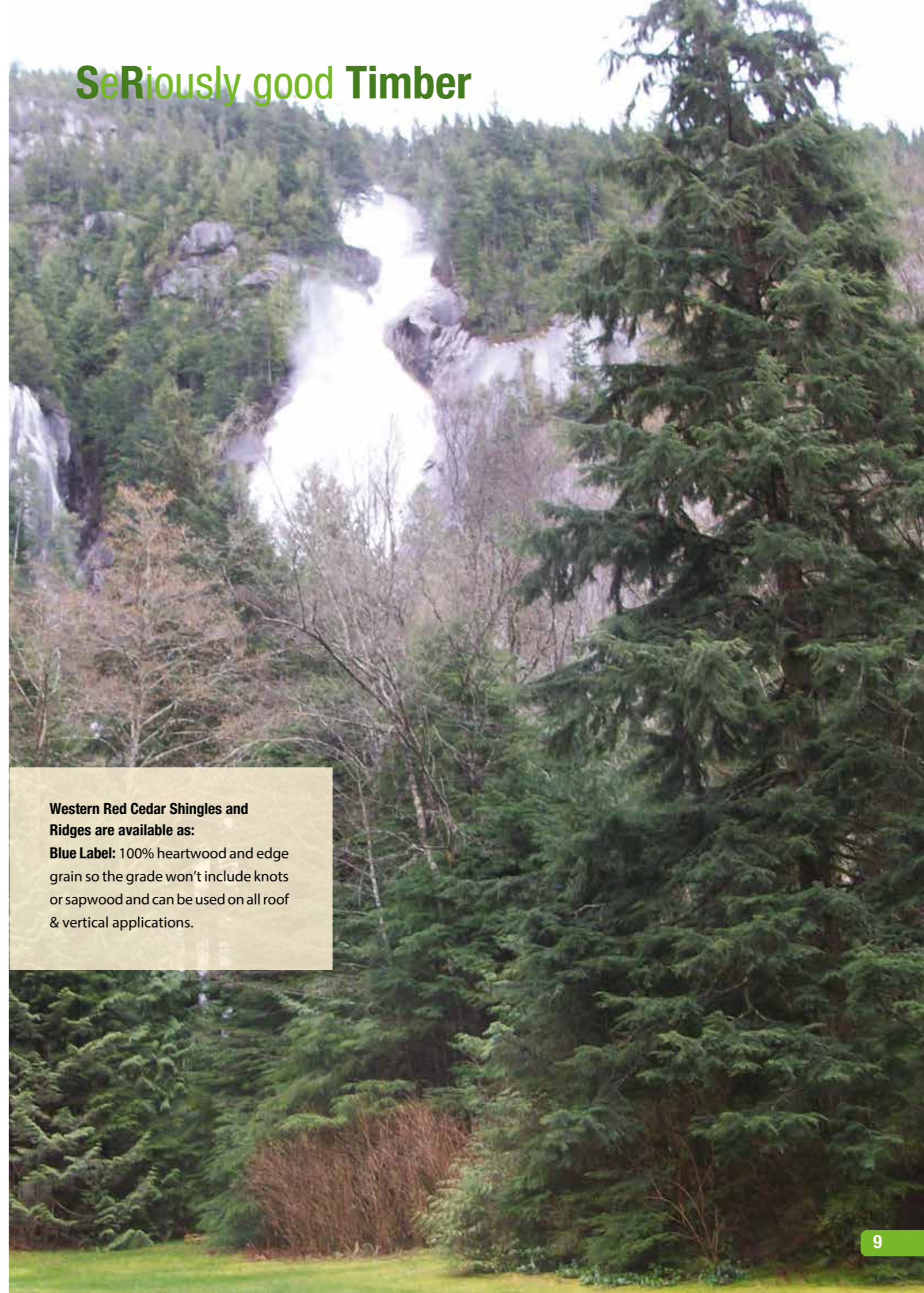
The best and most reliable "brand" is called "Certi", which comes in a range of patterns, both with and without additional types of treatment (such as extra wood preservative or flame-retardant), and the best known in this range is the standard shingle, called "Certigrade".

This is a guaranteed high-performance product, fully backed by the Cedar Shake and Shingle Bureau. Members of the CSSB are regularly inspected by the Bureau and given a third-party Quality Assurance, the "Certigrade" mark, when their products meet the CSSB's exacting quality standards, meaning you can trust "Certigrade" shingles to always be reliable and consistent.

Top quality shingle is referred to as "Blue label". These are 100% heartwood, 100% clear (from knots or other wood defects), and 100% "edge grain" (cut radially from the log, giving both improved resistance to weathering and improved resistance to shrinkage and distortion). Only the "Certigrade" brand of Blue Label shingles carry a warranty to prove all of the above.

Western Red Cedar can be factory machined to almost any profile. We recommend the use of Stainless Steel nails to fix the shingles as these will not be affected by the tannin which occurs naturally in Western Red Cedar.

SeRiously good Timber



Western Red Cedar Shingles and Ridges are available as:
Blue Label: 100% heartwood and edge grain so the grade won't include knots or sapwood and can be used on all roof & vertical applications.

SR Timber Scaffold Board

Our **Scaffold Boards** are produced to the highest standards in our privately owned sawmill in Latvia, and imported as a finished product to our timber terminal here in the UK. You can rest assured that all SR Timber Scaffold Boards are fully compliant to BS2482:2009.

Furthermore, SR Timber Scaffold Boards have achieved the 'Kitemark' quality stamp from the British Standards Institution (BSI), meaning our boards are of the highest level of quality and safety.

	BS 2482:2009	MEETS THE STANDARD
SAFE SUPPORT SPAN	1.2m (see end bands)	4
GARDING METHODS	Machine or Visual	4
TESTING	100% Inspection	4
DIMENSIONS	Meets BS 2482	4
DESIGNATED LOADS	BS 2482	4
IDENTIFICATION	Kitemark Number	4

What you will get from SR Timber Scaffold Boards:

- All scaffold boards are visually or machine graded to BS 2482:2009
- Kitemark License number KM637205
- We offer both 1.2m and 1.5m support spans
- 38mm (d) x 225mm (w) boards ranging from 2.4m to 3.9m in length
- Materials are sourced from FSC and PEFC sustainable forests
- Fully nailed end bands ensure durability

Scaffold Board performance:

To help you use the most effective boards for your scaffold, here are some of the strength properties from BS2482:2009:

Target board Thickness	Target Span	Working moment of resistance of a single board where:	
		An applied load acts only on an individual board kNm	An applied load is spread uniformly* across a minimum of 4 boards
kNm	m		
38	1.2	0.50	0.61
38	1.5	0.65	0.81

*i.e. via a rigid building pack; if greater loads, e.g. for loading bays, are required it's important these are calculated and the support spans reduced.



What are SR Timber Scaffold Boards made from?

SR Timber Scaffold Boards are produced from the highest quality slow grown spruce (Whitewood) Picea Abies and Pine (Redwood) Pinus Sylvestris grown in Northern Europe, the only permitted species when machine grading scaffold boards.

We are extremely conscious of environmental issues, and as such, our scaffold boards are FSC / PEFC certified, guaranteeing you that your timber comes from sustainable sources and ensures you have the best material for your project.

Marking

Every board we supply is marked with the following:

- Manufacturer's name - SRT
- Support span – 1.2m or 1.5m Max
- BSI KM licence number (KM637205)
- VG (visually graded) or MG (Machine graded)

Peace of mind

Safety is our top priority and to guarantee your peace of mind, we take extra precautions when developing our products to ensure they meet and exceed the industry requirements.

Every scaffold board comes standard with fully nailed end bands, made from zinc coated mild steel and conform to BS EN 10143, to ensure durability. These end bands can be personalised with your company name and/or logo on request. Stamped on these end bands is the British Standard code, BS 2482:2009; demonstrating the board meets all industry requirements, as well as the Kitemark stamp which effectively represents 'top marks' in the industry for quality and safety.

Our highly trained staff grade the boards (a process that is assessed by a third party and audited twice a year by BSI) to ensure BS 2482 compliance – this helps us control a variety of potential defects such as:

- Dimension
- Size and quantity of knots
- Wane
- Fissures and splits
- Slope of grain
- Rate of growth
- Decay and insect attack
- Size of resin pockets



SR Timber Scaffold Board



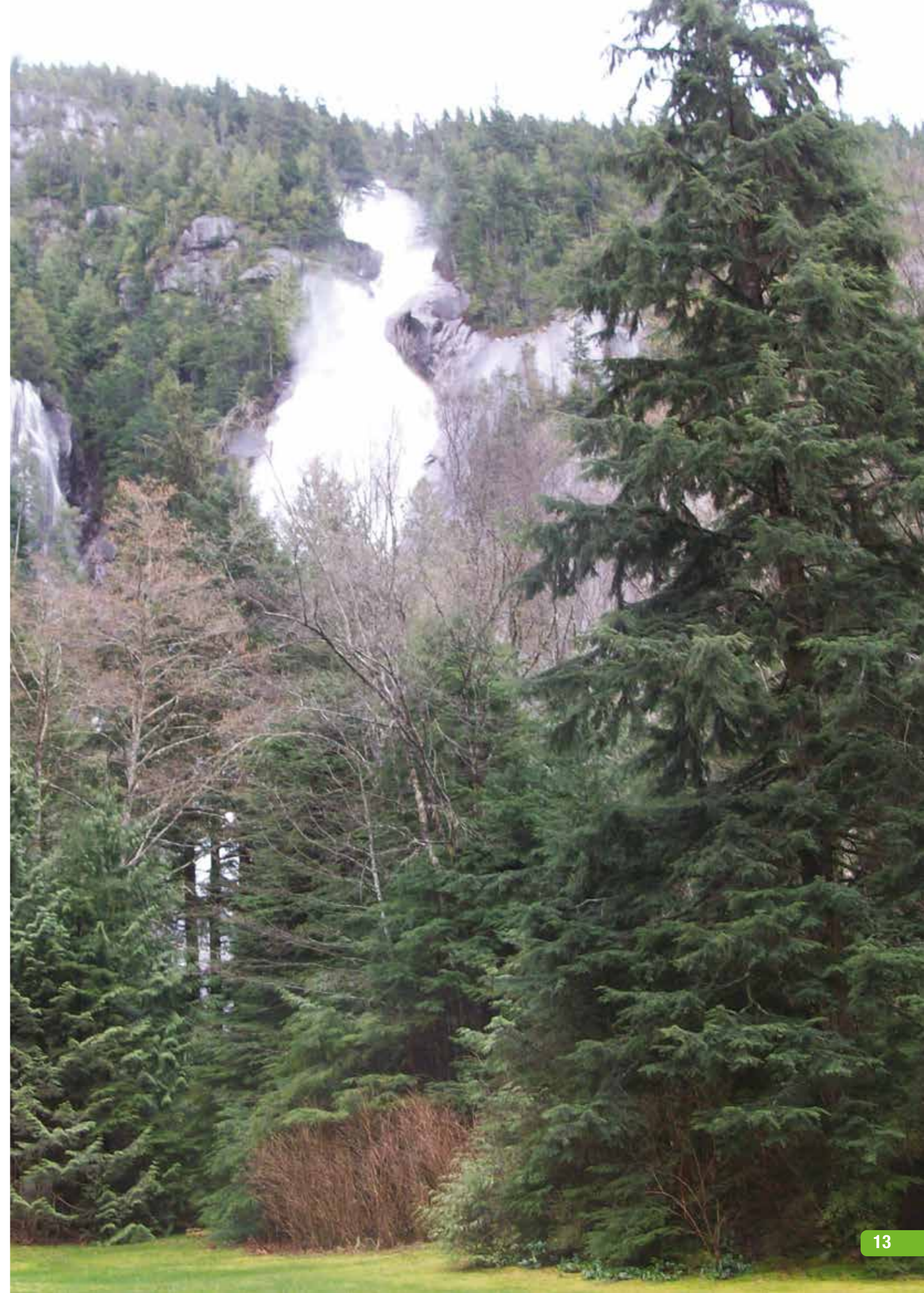
Care and maintenance

SR Timber Scaffold Boards are made to last, however for good practice and in order to maintain their condition here are some guidelines:

- The end bands should be checked and replaced if necessary after use and any loosened/missing nails should be replaced.
- If a board shows signs of being accidentally dropped or otherwise abused it should be discarded.
- All nails, screws, etc. should be removed and the board checked for damage.
- Limited splits in the length of the board are permissible- those less than 12mm deep are acceptable. If deeper, they should not exceed 225mm in length; they may be repaired using nail plates. Splits running across the board are not permitted. A board may be cut to shorten it to bring it within the requirements.
- Any board with a cut deeper than 2mm that is not parallel to the board edge, should be shortened to remove the cut.
- Any board that has been notched should be shortened to remove the notch.
- If there is any sign of rot or decay the board should be discarded.
- All boards should be stored dry and have any concrete removed.
- Stored boards should be regularly checked for signs of decay, especially fungus and wet rot.
- Boards should be stored with a regular flow of air around them and should not be left close piled for more than 3 months. If the anticipated storage is for longer the boards should be stored with 'timber spacers' in-between every layer.



SeRiously good Timber



SR Timber The Timber Specialists

Expertise

At **SR Timber** we live and breathe timber.

With decades of producing, importing, supplying and installing timber products, means we know the market from every angle. That's why we understand exactly what our customers need and how we always give you the highest quality products at the best value you can find.

It also means we are producing world-class products.

Corporate Social Responsibility

At SR Timber we are continually developing our approach to Corporate Social Responsibility (CSR) and conduct our business in an ethical and sustainable way. As such, we fully recognise our corporate responsibilities to our shareholders, employees, customers and suppliers, and we are committed to good practice in all our activities.

We supply timber materials to Skillbuild as well as local building colleges and are able to support a variety of charities. This includes Great Ormond Street Hospital through the Roofing Racers involvement at the London triathlon.

Policies include:

- Business Principles and Code of Ethics
- Environment
- Environmental Management
- Energy and Transport
- Carbon Emissions
- Packaging and Waste Reduction
- Waste Management
- Health and Safety
- Community and Donations
- Employee Development
- Training

Our professional and responsible approach gives you total assurance that we go above and beyond the Corporate Responsibility criteria demanded by today's contracts.

Delivery and service

Using our own production facilities and raw materials means we can guarantee you continuity of supply. So, you get the material you want, when you want it.

Controlling the process means we always deliver, ensuring quality control and adaptability.

With SR Timber you can be sure of:

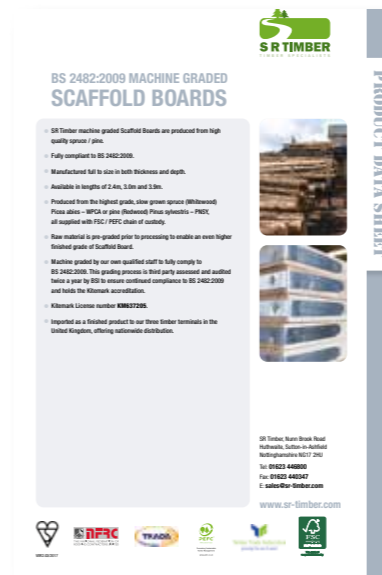
- Quality backed by experience
- Raw material availability and continuity of supply
- Quality control and adaptability
- Low, if not zero percentage of timber waste
- Longer average length of specifications
- Bundles/packs containing one length only, for easier stock management
- Pack sizes more suitable for storage and safety, all products also come with storage bearers attached
- Second to none delivery and service



Supporting Information

If you need assistance with choosing the right timber for your project please don't hesitate to contact us. We can also supply you with copies of our 'Guide to Graded Roofing Battens' and product datasheets.

These are also available on our website at www.sr-timber.co.uk.



SeRiously good Timber... SR Timber



SR Timber, Nunn Brook Road, Huthwaite, Sutton-in-Ashfield, Nottinghamshire. NG17 2HU
Tel: 01623 446800 Fax: 01623 440347
E: sales@sr-timber.com www.sr-timber.com

Our passion is timber and delivering the best possible solutions



Promoting Sustainable
Forest Management
www.pefc.co.uk