



LEAD REPLACEMENT PRODUCTS FOR TILE AND SLATE ROOFS

PRODUCT GUIDE

October 2019

www.hambleside-danelaw.co.uk

+44 (0)1327 701 910

Danelaw® LEAD-REPLACEMENT

Lead has been used within roof construction for centuries from flashings to flat roofs. It can be moulded to any shape and has a high resistance to corrosion and is non-combustible.

Nowadays health concerns, raw material costs and environmental responsibility are the key contributors in the increasing demand for lead replacement solutions.

It is well-known that lead is toxic and a health risk through inhalation or ingestion. It has led to the material being banned from being used on roofs in other countries, such as Denmark, other Scandinavian countries and Australia.

The regulations relating to lead have been revised twice, and the latest is 'Control of Lead at Work Regulations 2002: Approved Code of Practice and guidance'. Regulation 6 requires the use a lead alternative product where one is available.

Alongside the health risks to us, other factors need to be considered when using lead;

- Lead has a high scrap value, increasing the potential of theft, leaving the building exposed to all weather conditions until replacement, which could cause costly damage alongside the cost of replacement
- Lead cannot be used on roofs where water is being reclaimed or recycled.

Architects, housebuilders, local councils and authorities are becoming more aware of the cost and environmental implications of using lead and lead flashings and therefore more lead alternative products are being specified.

Lead replacement products have been designed for a variety of applications, and are a cheaper, lighter and easier to handle option compared to lead. It has been accepted that majority of the lead replacement products are up to 50% quicker to install and 80% lighter.

Flashings are used to 'weatherproof' various roof junctions, such as inclined valleys, between dissimilar roof coverings, or where tile or slate courses finish at a side abutment are common examples.

Hambleside Danelaw were the first to manufacture a range of GRP flashings and the most successful dry fix valley troughs.

The Danelaw product range encompasses a vast range of products to replace the use of lead on roofs;

- GRP Valley Troughs
- GRP Bonding Gutters
- GRP Continuous Soakers
- Individual Soakers
- GRP Universal Abutment Cover Flashing
- Fast Flash (fully adhesive flexible flashing)

GRP is a thermoset material with relatively low rates of thermal expansion and high durability leading to very long service life periods. Not only this, it has no harmful run-off into water courses, making it a viable environmentally friendly option and has very little risk of theft.

You can view the range in this product brochure. For further information such as installation guidelines and sizing, you can visit our website.



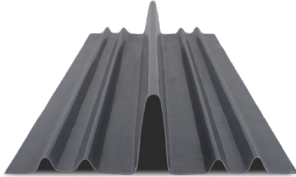
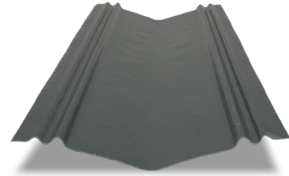
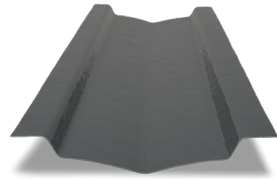
DRY FIX VALLEY TROUGH APPLICATION



DRY FIX AND TRADITIONAL VALLEY TROUGHS

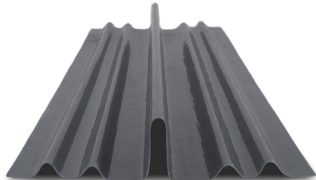
Provides secure drainage for inclined roof valleys, with a close cut appearance for new build and refurbishment.

Dry Fix Valley Troughs are suitable for roof pitch differentials of up to 20°. Visit website for detailed tile compatibility.



HDL DVT/ 1 (L 3000mm)
HDL DVT/2 (L 2400mm)

Central Upstand: 105mm
Suitable for profiled tile roofs.



HDL DVLPT/1 (L 3000mm)
HDL DVLPT/2 (L 2400mm)

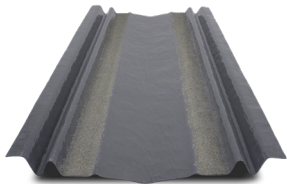
Central Upstand: 80mm
Suitable for flat and plain tile roofs.



HDL DVS/1 (L 3000mm)
HDL DVS/2 (L 2400mm)

Central Upstand: 55mm
Suitable for slate roofs.

Traditional Open Valley Troughs for tiles and slates. Suitable for roof pitch differentials of up to 15°.



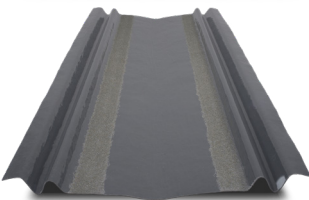
HDL 361 (L 3000mm)
HDL 362 (L 2400mm)

For 'narrow' application compliant with the NFRC TB28 bulletin. Suitable for mortared bedded tile roofs.



HDL 401 (L 3000mm)
HDL 402 (L 2400mm)

For standard application compliant with the NFRC TB28 bulletin. Suitable for mortared bedded tile roofs.

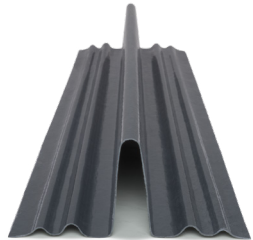
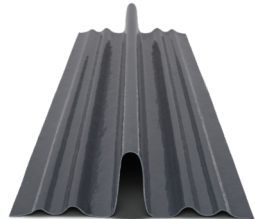


HDL RP3 (L 3000mm)
HDL RP4 (L 2400mm)

For 'narrow' application without retention bar. Suitable for mortared bedded tile roofs.

DRY FIX AND TRADITIONAL BOND

Creates a weathertight joint between semi-detached or terraced properties using two dry fix options and one mortar bedded option.



All Danelaw GRP Flashings carry a 30 year guarantee.



**HDL SVT (W 330mm)
HDL SVTU (W 360mm)**

HDL SVT for 'narrow' application
HDL SVT for 'standard' application
compliant with the NFRC TB28
bulletin. Suitable for slate roofs.

HDL SSVT

Suitable for Scottish Slate roofs
fixed directly to sark boards.

Roof pitch differential of up to 15°.

BONDING GUTTERS®

For dissimilar roof coverings on
pitched roofs. Manufactured from GRP, available in
lipped and unlipped options.

HDL DBG1

For slates, flat and plain tile
roofs.
Central upstand of 70mm.

HDL DBG2

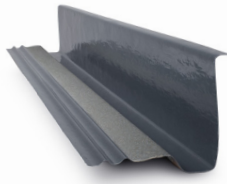
For profiled tile roofs, or
where there may be a greater
difference in height of the roof
coverings on either side.
Central upstand of 100mm.

HDL BG

Suitable for all slate and tile
mortar bedding applications.

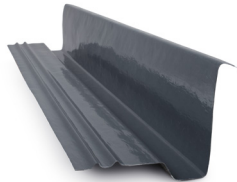
CONTINUOUS SOAKERS

The range provides a quick and efficient method of forming a secret
gutter or weatherproof solution at the tile or slate roof side abutment
junction.



HDL CST

Suitable for tile roofs.
Lipped (H 150mm) and
unlipped (H 140mm) options.
For mortar bedded tile use.



HDL CSS

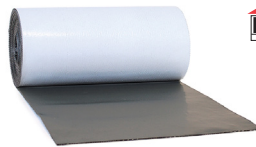
Suitable for slate roofs.
Lipped (H 150mm) and
unlipped (H 140mm) options.
For slates or dry laid tiles.



HDL SCSS

Specifically designed for use
on Scottish slate roofs.
Fixed directly to sark boards.

FAST FLASH®

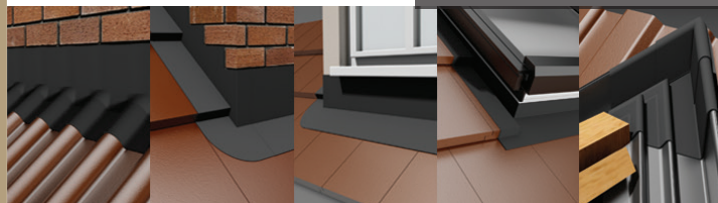


**FAST FLASH 140 FAST FLASH 280
FAST FLASH 370 FAST FLASH 560**

Fast Flash® A secure flexible
flashing solution that is available
in four widths. The product
can be installed on roof with
a minimum 5° pitch and is
compatible with most widely
used roof coverings. It is easy
to install with a fully adhesive
reverse. No specialised tools
required. Colour availability;
Traffic Grey, Black and Tile Red.

- Lead replacement
- Great stretching ability, can be
increased by 60% in length and
20% in width
- Re-usable off cuts - minimal waste
- Can be cut to any shape
- 30 minutes to strong bond

FAST FLASH DETAILS



GRP Valley Troughs,
Bonding Gutters and
Continuous Soakers
BBA certification



INDIVIDUAL SOAKERS

A range of lead-free preformed soakers for roof abutment details covering interlocking flat tiles, single lap slate and plain tiles, and double lap plain tiles and slates. They are supplied preformed to save time and effort on site and may be finished with lead or a lead alternative flashing such as Fast Flash or Abutment Cover Flashing (HDL UCAF). All tile soakers are available in both left and right options. Visit website for detailed tile compatibility.



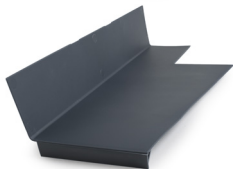
HD MDS

Suitable for flat concrete tile roofs.



HD PCS

Suitable for plain clay and concrete tile roofs.



HD RRS

Suitable for thin leading edge concrete tile roofs.



HD DTS

Suitable for interlocking plain tile roofs.



HD RTS

Suitable for thin leading edge concrete tile roofs.



HD RCS

Suitable for interlocking slate roofs.



HD SRRS

Suitable for thin leading edge concrete tile roofs.



**HD SS500
HD SS600**

Suitable for 600 x 300mm or 500 x 250mm slate roofs.

UNIVERSAL ABUTMENT COVER FLASHING



HDL UCAF

Can be used for all roof abutments. Easily trimmed to fit directly onto brick, render or stepped applications.

INDIVIDUAL SOAKER APPLICATION



RELATED PRODUCTS

DRYSEAL®

Hambleside Danelaw also manufactures Dryseal, for flat and low pitched roofs. It is a waterproofing membrane system made from GRP. It is different to 'wet-lay' systems as the whole system is made from preformed components ready to mechanically fix and joint on site.

Dryseal is a flexible, versatile and durable flat roof choice. It can be used across all sectors including commercial, housing developments, one-off self-build projects, heritage, green roofs and terrace/balcony areas. The system can be fitted with decorative 'rib' trims, which help give the appearance of lead rolls or zinc seams.

ATTENTION ROOFERS!

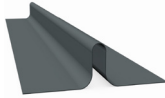
You can become an Approved Dryseal Contractor and install this unique flat and low pitched roof system. If you are interested, all you need to do is contact our sales team



Membrane roll



Roll trim



Seam trim



LEAD DRYSEAL



**YOU CAN
DOWNLOAD ALL
OF OUR DANELAW
PRODUCT
BROCHURES FROM
OUR WEBSITE**

Hambleside Danelaw Building Products

Hambleside Danelaw Limited
Long March, Daventry,
Northamptonshire
NN11 4NR

Tel: +44 (0)1327 701910
Fax: +44 (0)1327 701919
Email: sales@hambleside-danelaw.co.uk
Web: www.hambleside-danelaw.co.uk

Hambleside Danelaw Ltd has a continuing product development programme. With any updates or changes to these products, we will ensure that is communicated to our customers and stakeholders.

In accordance with our policy for continuous improvement we reserve the right, should the need to arise, to amend product specifications without prior notice. Terms and conditions of sales are available upon request.

All content is as recommended by Hambleside Danelaw Ltd. Intellectual property of Hambleside Danelaw Ltd, permission required to reproduce all content of this publication.

