



High-Performance Solutions and Compounds
for Roofing and Structural Waterproofing



IKO Worldwide and in the UK



IKO is a truly global company with manufacturing facilities all over the world, shipping to nearly 100 countries.

In the UK, the IKO name has been built on a foundation of quality and an ethos of customer service which remains as strong today as it did over 100 years ago.

IKO PLC is well established as a UK market leader in the design, manufacture and installation of roofing, waterproofing and insulation products and systems. We are committed to sustainability and continued investment in innovative ways of manufacturing, production and distribution within UK Manufacturing.

IKO PLC have been manufacturing in the UK for over 130 years and continue to invest in manufacturing; developing and producing new products to service market demand directly from the various manufacturing plants around the country. Manufacturing in the UK comes with a number of excellent benefits such as, quality control, speed of response and decreased CO₂ emissions from transportation.

IKO PLC, Head Office, Wigan, Lancashire
Bituminous Membrane & Liquid



IKO Polymeric, Clay Cross, Chesterfield
Single Ply & High Performance DPC

IKO PLC, Grangemill Quarry, Matlock, Derbyshire
Mastic Asphalt & Hot Melt

IKO Insulations, Alconbury Weald, Cambridgeshire
PIR Insulation

'Thinking globally, acting locally'

IKO firmly believe in assisting local communities in a number of ways. The Fix That Hut initiative (founded in 2006) invites applications from worthy projects which are at the heart of local communities and in need of roof repairs. The reduced carbon footprint from our UK Manufactured products (delivered locally) can also have a positive impact on your own environmental credentials. Compared to some European imports, an IKO roofing system can provide over a +90% reduction in CO₂ emissions by delivering directly from the source of manufacture to site.

Preparation of Substrate

All you need to prepare and prime surfaces prior to the application of waterproofing materials.

IKOpro Quick Dry Bitumen Primer
IKOpro Self-Adhesive Bitumen Primer
IKOpro IKO Easyseal Bonding Agent

Adhesion

Essential components for bonding roofing felts and chippings, to ensure sound waterproofing.

IKOpro High-Performance Roofing Felt Adhesive
IKOpro High-Performance Felt Lap Adhesive

Repair & Waterproofing

A wide range of solutions to repair and care for roofs, including emergency solutions.

IKOpro Acrylic Roof Coat System
IKOpro Acrylic Roof Repair Cartridge
IKOpro Universal Flat Roof Renovator
IKOpro Roof & Gutter Repair Mastic
IKOpro Universal Roof Repair Compound
IKOpro Rapid Repair Spray IKOpro Roofcryn
IKOpro Solvent Free Waterproofer
IKOpro Stickall

Finish & Protection

A selection of products to protect and weatherproof external surfaces plus high-performance liquid damp proofing products.

IKOpro Solar Reflective Aluminium Paint
IKOpro Synthaprufe Original
IKOpro Synthaprufe LAC
IKOpro Synthaprufe rade
IKOpro Paving & Patjo Protector



Preparation of Substrate

IKOpro Quick Dry Bitumen Primer

To prepare and stabilise surfaces prior to applying bitumen membranes and flashing tapes.

IKOpro Quick Dry Bitumen Primer is a bituminous priming solution for stabilising dusty and porous surfaces prior to the application of bitumen roofing and waterproofing products. It dries in approximately 30 minutes, with no residual tack.

When used in conjunction with **IKOpro Roofing Felt Adhesive** (pg 10), the bond between the substrate and the waterproofing material being applied is significantly improved and helps ensure a long-term, watertight finish.



Use

- May be applied to many substrates including concrete, brickwork, zinc, metal, and existing bituminous roofing
- For use with bituminous membranes and liquid IKOpro maintenance products.

Application

- All surfaces should be clean, dry and free from grease, oil, dirt and loose material
- Ready for use and should not be thinned
- Apply an even coating with a brush or roller, working well into the surface
- Allow the primer to dry thoroughly (approx. 30 minutes at 20°C, dependent on weather conditions and surface porosity)
- Keep the primed surface dust free prior to application of subsequent waterproofing membranes
- Do not apply when surface temperature is below 5°C.

Coverage

- Metal, 10-15 m²/litre
- Concrete, 3-4 m²/litre
- Bituminous roofing, approximately 5 m²/litre

Product	Size	Code
IKOpro Quick Dry Bitumen Primer	2.5L	MW646402
	5L	MW646405
	25L	MW646408

Preparation of Substrate

IKOpro Self-Adhesive Bitumen Primer

Bitumen primer for self-adhesive membranes.

IKOpro Self-Adhesive Bitumen Primer is a fast-drying, rubber modified, bituminous priming solution designed to seal and prepare surfaces prior to the application of IKO self-adhesive roofing and waterproofing membranes. Drying time is approximately 1 hour depending on the substrate and the weather conditions.

It is ideal for ensuring a long-term bond between the substrate and subsequent self-adhesive bitumen membranes being applied.



Use

- May be applied to many substrates including concrete, wood, brickwork and metal
- For use prior to installation of IKO self-adhesive membranes.

Application

- All surfaces should be clean, dry and free from grease, oil, dirt and loose material
- Apply by brush
- Only prime the area to be covered with membrane within 4 hours to prevent dust contamination
- Porous surfaces may need two coats.

Coverage

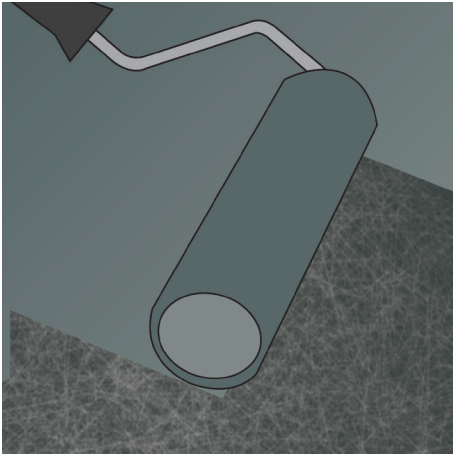
- Metal, 10-15 m²/litre
- Concrete, 3-4 m²/litre
- Bituminous roofing, approximately 5 m²/litre

Product	Size	Code
IKOpro Self Adhesive Bitumen Primer	2.5L	MW646412
	5L	MW646415
	25L	MW646419

IKOpro IKO Easyseal Bonding Agent

Fast drying primer for adhesion of IKO Easyseal Self-Adhesive Bitumen Roofing Membranes

IKOpro IKO Easyseal Bonding Agent is a fast drying primer. The solvent based primer, based on synthetic rubber and resins is specially formulated to activate self-adhesive bitumen roofing membranes to promote a strong bond even at low temperatures.



Use

- With the IKO Easyseal Self-adhesive product range
- For existing roofs

Application

- Metal roofs should be prepared with a wire brush
- The material and the substrate to be bonded must be dry and clean.
- Apply in an even layer by brush or roller.
- Must not be thinned or mixed with other products.
- Only use in dry weather conditions, no moisture must be enclosed between the primer layer and the self-adhesive membrane.
- Apply self-adhesive membranes as soon as possible after the IKOpro IKO Easyseal Bonding Agent is completely dry.
- The minimum application temperature is 5°C.

Coverage

- 3-5m²/litre depending on substrate

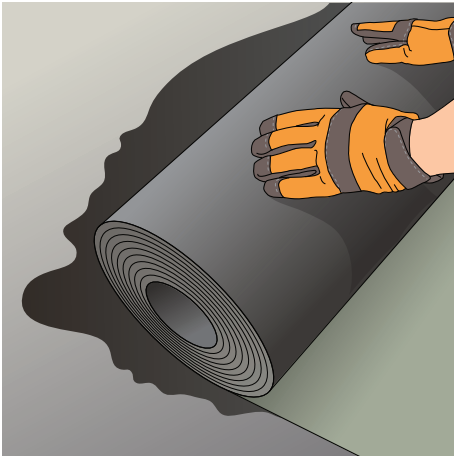
Product	Size	Code
IKOpro IKO Easyseal Bonding Agent	5L	23500005

Adhesion

IKOpro High-Performance Roofing Felt Adhesive

A cold applied bitumen adhesive for bonding and sealing roofing felts.

IKOpro Roofing Felt Adhesive is a bitumen adhesive that enables total bonding of roofing felts without the need for hot bitumen or flames.



Use

- An adhesive for bonding roofing felt to concrete, metal, timber and similar surfaces and for bonding successive layers of roofing felt.

Application

- All surfaces must be clean, dry and free from grease, oil, dirt and loose material
- Apply IKOpro Roofing Felt Adhesive by brush, ensuring an even coating and when tacky (after approximately 15 minutes), roll roofing felt into position and press down firmly
- Porous surfaces may require priming with a coat of **IKOpro Quick Dry Bitumen Primer** (pg 6) and should be allowed to dry before proceeding.

Coverage

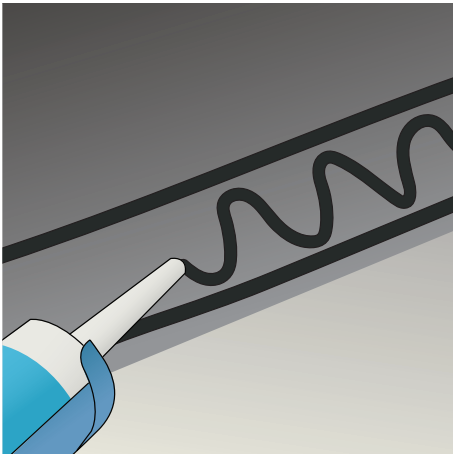
- 1.0 – 1.5 m²/litre depending on substrate and ambient temperature.

Product	Size	Code
IKOpro Roofing Felt Adhesive	1L	MW686231
	2.5L	MW686232
	5L	MW686235

IKOpro High-Performance Felt Lap Adhesive

For sealing roof overlaps and corners on felt and felt roof tiles.

IKOpro High-Performance Felt Lap Adhesive is a cold applied, flexible bitumen adhesive for securing and sealing overlaps of bitumen roofing felt systems.



Use

- For use on bitumen felt roof membranes
- Ideal for sealing laps and completing detailed areas.

Application

- All surfaces must be clean, dry and free from grease, oil, dirt and loose material/mineral
- Score a guideline on the mineral surface of the relevant sheet of felt
- Apply a continuous 5mm bead of sealant to this line and another 100mm to the inside of the line. Join these two beads with a snaking 5mm bead across the width of the lap
- To make the lap, press the overlying sheet into position and roll with a seam roller so that a small amount of sealant is squeezed out to form a visible bead at the edge of the lap.

Coverage

- A 310ml cartridge is sufficient to complete 2 to 3 linear metres of lap joint.

Product	Size	Code
IKOpro Felt Lap Adhesive	310ml	MW676310

Repair & Waterproofing

IKOpro Acrylic Roof Coat System

A liquid-applied, solvent-based and flexible acrylic roof waterproofing system.

IKOpro Acrylic Roof Coat is designed to offer 10 years waterproofing protection to new or existing roof surfaces when reinforced with IKOpro GRF 100gsm fleece and following IKO's specification.

Use

- Can be applied on top of existing waterproofing including asphalt, bituminous felt and concrete
- Single component acrylic used direct from the tin.

Application

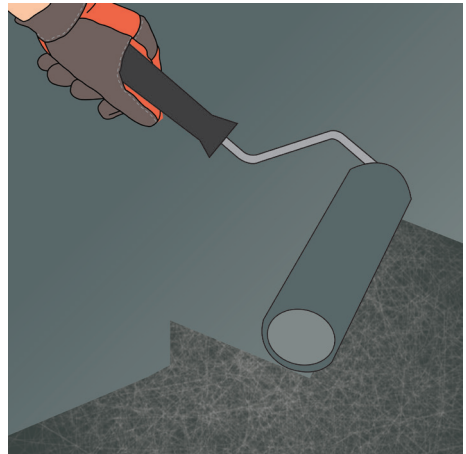
- All surfaces must be clean, dry and free from grease, oil, dirt and loose deposits such as leaves, snow or excess water
- Bridge all joints, cracks or splits with the **IKOpro Bridging Tape**
- Apply the IKOpro Acrylic Roof Coat to the prepared surface by roller or brush at the recommended coverage rate
- Lay and overlap pieces of IKOpro GRF 100gsm fleece 50mm at the side and end joints, into the wet coating and apply pressure with a roller, making sure the GRF fleece is fully covered with no air holes and allow to dry for at least 6 to 8 hours
- Apply the top coat by roller or brush at the recommended coverage rate.

Note: a full system installation guide and video is available from: www.ikogroup.co.uk

Coverage

- First coat; minimum coverage rate: 0.7 litre/m² on smooth surfaces and 1.3 litre/m² on rough surfaces
- Final top coat; minimum coverage rate: 0.5 litre/m².

For more information scan the QR code



Product	Size	Code
IKOpro Acrylic Roof Coat	20L	02401790
IKOpro GRF 100gsm Mat	25m x 1m	70250001
IKOpro Bridging Tape	45m x 75mm	MW700206

IKOpro Acrylic Roof Repair Cartridge

Flexible acrylic resin waterproofing treatment for roof protection.

IKOpro Acrylic Roof Repair Cartridge is an effective emergency repair for roofs and gutters which can be applied in all weathers. Instant leak repair for roofs, gutters and brickwork.

Use

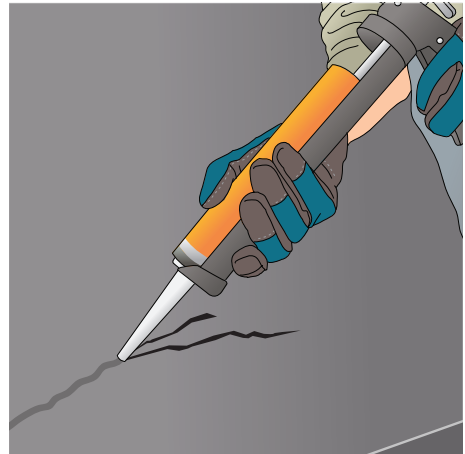
- For use on flat/pitched roofs, chimney stacks, all brickwork and concrete
- Stops leaks instantly and contains fibres to bridge splits and cracks up to 10mm wide
- After drying the treatment remains flexible and does not crack or rupture
- Colour: Grey.

Application

- Surfaces may be damp but clear of standing water
- Apply in temperatures between +5°C and +30°C
- Always wear protective gloves when using this product
- Apply by skeleton gun
- Apply liberally into cracked or onto damaged areas and smooth over with trowel or putty knife
- Work well into damp areas to dispel moisture and ensure good adhesion
- Store in cool dry conditions and away from sources of ignition.

Coverage

- 0.2 m² per cartridge, depending on the depth and severity of the damage to be repaired.



Product	Size	Code
IKOpro Acrylic Roof Repair Cartridge	310ml	MW243816

Repair & Waterproofing

IKOpro Universal Flat Roof Renovator

Seamless waterproof coating to prolong the life of flat roofs.

IKOpro Universal Flat Roof Renovator is a flexible, bituminous coating containing reinforcing fibres and designed for easy application to protect and prolong the life of existing roofing systems.

The ideal solution for protecting and rejuvenating your roof.



Use

- For existing roofs
- Metal roofs should be prepared with a wire brush
- Prime iron and steel with rust inhibitive primer.

Application

- Any blisters and cracks present should be repaired using **IKOpro Roof Repair Compound** (pg 17)
- Stir IKOpro Universal Flat Roof Renovator thoroughly and then apply an even coating using a brush at a rate of 2.5 m²/litre
- Allow product to dry thoroughly (approx 24 hours) and then apply a second coat at right angles to the first at a rate of 2.5 m²/litre
- For additional ultraviolet protection, slate granules or chippings can be immediately sprinkled into the top coat whilst still wet.

Coverage

- 2.5 m²/litre/coat.

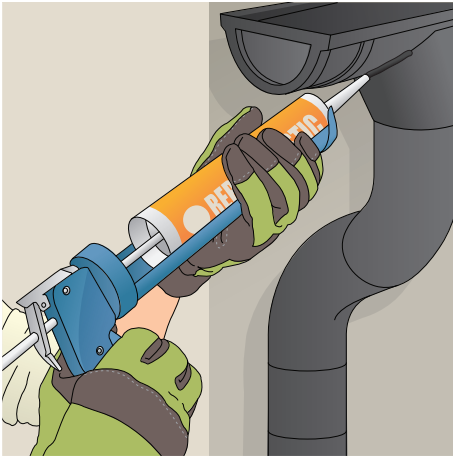
Product	Size	Code
IKOpro Flat Roof Renovator	2.5L	MW941500
	5L	MW941600
	22.5L	MW941622

Repair & Waterproofing

IKOpro Roof & Gutter Repair Mastic

Mastic for localised repairs of splits and cracks in roof felt and gutters.

IKOpro Roof & Gutter Repair Mastic is a highly flexible sealing compound which provides a long lasting weatherproof seal.



Use

- For joints in gutters, splits and cracks in roofing sheets, flashings and other similar roofing applications
- Ideal for smaller repair jobs.

Application

- All surfaces must be clean, dry and free from grease, oil, dirt and other contaminants which may impair adhesion
- Apply IKOpro Roof & Gutter Repair Mastic along the joint at a steady speed in order to produce a smooth and evenly filled joint. Use a trowel or filling knife to ensure mastic fills the joint, making sure that all air pockets are eliminated
- Touch-dry in approximately 3 hours.

Coverage

- Depending on application, use approx 8 linear metres per 310ml cartridge with a joint of around 6mm wide by 6mm deep.

Product	Size	Code
IKOpro Roof & Gutter Repair Mastic	310ml	MW942200

IKOpro Universal Roof Repair Compound

A thick, flexible repair mastic for repairs to roofs and gutters.

IKOpro Universal Roof Repair Compound is a mastic reinforced with fibres for repairs to roofs.

It is ready to use within a wide range of temperatures and forms an ideal preparation for further large scale work by repairing cracks, tears and other damage.

Use

- For felt and mastic asphalt roofs
- Can also be used for filling and sealing cracks and gaps in concrete structures, repairs to leaking and damaged gutters, for sealing between laps and around bolt holes on sheeted roofs.

Application

- All surfaces must be clean, dry and free from grease, oil, dirt and other contaminants which may impair adhesion
- Apply IKOpro Universal Roof Repair Compound using a trowel or filling knife. Overfill holes slightly and force the material well into any cracks
- Spread a layer of mastic at least 3mm thick to extend 50mm from the repair in all directions onto a sound surface
- For large cracks, greater than 3mm wide, fill as above but then bed in a reinforcing strip of woven glass fibre scrim or polyester mesh to cover the crack, overlapping by 50mm all round and then cover this with a further 2mm thick layer of IKOpro Universal Roof Repair Compound.

Coverage

- The coverage is dependent on the depth and severity of the damage to be repaired. As a guide the coverage is approximately 0.3 m²/kg at 3mm thick.



Product	Size	Code
IKOpro Universal Roof Repair Compound	1kg	MW686101
	2.5kg	MW686102
	5kg	MW686105

Repair & Waterproofing

IKOpro Emergency Roof Repair

Stops sudden & unforeseen leaks in roof felt and gutters.

IKOpro Emergency Roof Repair has been specially formulated to stop leaks in roofs and gutters in emergency situations, even under the most severe weather conditions, helping to prevent extensive damage to your home, enabling more time for a permanent repair to be planned.



Use

- For felt, masonry and metals roofs such as zinc, copper and lead.

Application

- All surfaces must be clean and free from grease, oil, dirt and loose deposits such as leaves, snow or excess water
- Immediately apply IKOpro Emergency Roof Repair to the problem area using a filling knife or trowel and press firmly
- Leave exposed to the elements, so that the curing process can take place satisfactorily
- Once weather conditions improve, it is recommended that the problem area is treated with one of IKO quality waterproofing membranes or roof repair products to provide further long-term protection.

Coverage

- The coverage is dependent on application, severity of leak or crack being filled.

Product	Size	Code
IKOpro Emergency Roof Repair	2.5kg	MW942100
	5kg	MW942105

IKOpro Rapid Repair Spray

**Seal for roof coverings,
gutters and drain pipes.**

IKOpro Rapid Repair Spray is a spray applied mastic formulated to provide rapid sealing on most surfaces, even when damp.



Use

- For most surfaces including bitumen felt, fibre cement, tiles, slates, asphalt, metal, wood and most plastics
- Not suitable for use on polystyrene.

Application

- All surfaces must be clean, dry and free from grease, oil, dirt and other contaminants which may impair adhesion
- Shake well before use. The ideal spraying temperature is between 15°C and 20°C. Lower temperatures will delay drying
- Spray across the repair area from a distance of 5cm to 30cm in several light even coats, applying beyond the area to be sealed
- It is intended that once IKOpro Rapid Repair Spray has cured, one of IKO's quality roofing membranes or roof repair products is installed for long-term maintenance.

Coverage

- One 500ml can will cover up to 0.15 m² depending on application thickness.

Product	Size	Code
IKOpro Rapid Repair Spray	500ml	MW942500

Repair & Waterproofing

IKOpro Roofcryl

High-performance, instant roof repair acrylic compound, ideal for emergency repairs and general maintenance.

IKOpro Roofcryl can be used on new and refurbishment projects and contains fibres which provide superior durability and life expectancy.*

IKOpro Roofcryl can extend the life of a flat roof by over 10 years.

* IKOpro Roofcryl cannot be used on PVC materials.



Use

- No primer required in most circumstances
- Can be applied in damp conditions
- Flexible
- Instant waterproofing
- Ideal for areas subject to ponding
- Exceptional weather resistance and long lasting.

Application

- Existing deck substrates should be assessed for structural strength, falls and drainage provision
- All surfaces should be sound and free from loose chippings, dirt, rust and any other surface contaminants that may affect adhesion
- Remove organic matter with **IKOpro Algae and Fungi Remover** (pg 9)
- Make good all flashings, holes, and major defects in the surface
- For best results apply during dry conditions
- Damp surfaces can be coated, but standing water should be removed
- Apply liberally using a stiff brush
- Pay particular attention to areas that are split or cracked
- Splits larger than 10mm wide may need additional reinforcement.

Coverage

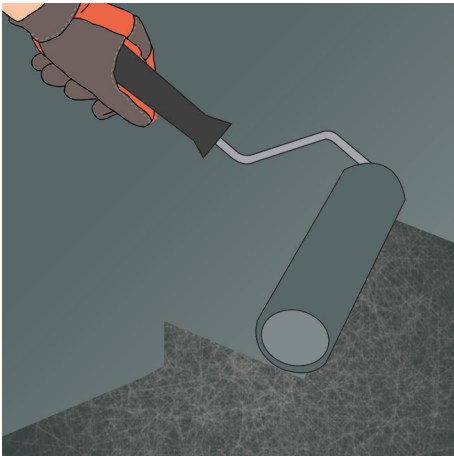
- 1kg/m² on smooth surfaces, extending to 2kg/m² on rougher surfaces.

Product	Size	Code (Black)	Code (Grey)	Code (White)
IKOpro Roofcryl	1kg	MW943601	MW943701	-
	5kg	MW943605	MW943705	MW943805
	20kg	MW943620	MW943720	-

IKOpro Solvent Free Waterproofer

Bitumen based emulsion for the protection of roofs.

IKOpro Solvent Free Waterproofer is an easy to use bitumen based emulsion for roofs and can be used as a waterproof coating on asphalt, fibre cement sheeting, concrete and bituminous roofing membranes. It is designed to extend the life of an existing waterproofing.



Solvent Free



Use

- For waterproofing coating on asphalt, fibre cement sheeting, concrete and bituminous roofing membranes to extend the life of existing waterproofing.

Application

- All surfaces must be clean, dry and free from grease, oil, dirt and loose material including chippings
- Treat and remove any algae and fungi using **IKOpro Algae and Fungi Remover** (pg 9)
- Any blisters and cracks in the roof surface should be repaired using **IKOpro Roof Repair Compound** (pg 17)
- Splits larger than 10mm wide may need additional reinforcement
- All surfaces should be primed using **IKOpro Quick Dry Bitumen Primer** (pg 6) and allowed to dry
- Apply a minimum of 2 coats of IKOpro Solvent Free Waterproofer with a brush or roller
- Each coat must be allowed to dry for at least 24 hours before applying the next
- Do not use when rain or freezing conditions are forecast during the 24 hour drying period.

Coverage

- 1.5 m²/litre/coat (0.67 L/m²/coat).

Product	Size	Code
IKOpro Solvent Free Waterproofer	2.5L	MW941802
	5L	MW941805

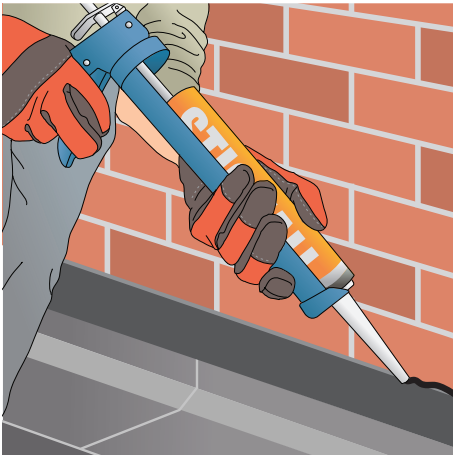
Repair & Waterproofing

IKOpro Stickall

Long-lasting sealant adhesive for the professional user.

IKOpro Stickall is a dense, all weather, bituminous sealing adhesive that remains plastic under normal temperatures and adheres well to most building surfaces.

It is a multi-purpose product with high permanent adhesive strength, good UV stability and resistance to sagging at high temperatures.



Use

- Sealing mastic in conjunction with IKOflash
- Used to seal cracks and blisters on felt roofs, as a sealant along the edges of ridge tiles and between laps or around bolt holes on sheeted roofs
- Around roof lights and for the repair of gutters
- Finishing mastic for sealing of rainwater pipes, chimneys and all sorts of roof penetrations
- Cold applied adhesive for additional bonding of bituminous shingles
- Sealing corrugated sheet accessories.

Application

- All surfaces must be clean, dry and free from grease, oil, dirt and loose material
- Apply IKOpro Stickall to the selected area
- Application temperature should be between 5°C and 30°C.

Coverage

- The coverage is dependent on the depth and severity of the damage to be repaired; around 3 m for a 1 x 1 cm grout.

Product	Size	Code
IKOpro Stickall	310ml	02401671

Finish & Protection

IKOpro Solar Reflective Aluminium Paint

Coating suitable for the protection of roofs against the effects of UV.

IKOpro Solar Reflective Aluminium Paint is a bituminous aluminium coating which can be applied to a wide range of substrates to protect against the effects of UV. The solar reflective coating gives good heat and light reflective properties, reducing solar heat gain on dark coated roofs and similar surfaces.



Use

- For bitumen membranes, bitumen coatings and metal
- Not suitable for application to mastic asphalt roofs.

Application

- All surfaces must be clean, dry and free from grease, oil, dirt and loose materials. Must be stirred thoroughly before use and frequently during application, preferably with a mechanical paddle stirrer to ensure an even distribution of the aluminium pigment. Ensure the paddle stirrer touches the bottom of the tin to agitate all the aluminium pigment. A minimum of 10/15 minutes stirring is required
- Apply in an even coating using a brush or roller at the recommended coverage rate. To ensure maximum durability and reflectivity two coats should be applied
- Allow the first coat to dry thoroughly (approximately 24 hours) before applying the second. Drying times will be extended in cold, damp conditions or if the coating is applied too thickly. Do not apply when rain is imminent or the surface temperature is below 5°C
- To ensure maximum continuing performance and reflectivity, surfaces must be repainted every 3 to 5 years.

Coverage

- Smooth surfaces: 6-8 m²/litre per coat. Coverage rates will be reduced on rough surfaces such as mineral surfaced felt.

Product	Size	Code
IKOpro Aluminium Paint	5L	MW943205
	25L	MW943219

Finish & Protection

IKOpro Synthaprufe LAC

Rubberised waterproofing liquid for use as a damp proof membrane and water repellent coating.

IKOpro Synthaprufe LAC is a high-performance waterproofing liquid used as a damp-proof membrane and water-repellent coating, prior to the erection of masonry.

A cold-applied bitumen and solvent mixture, once applied, dries to form a waterproof membrane.



Use

- For waterproofing foundations, retaining walls, abutments, steel columns, beams, lintels and structures where cladding forms the outer leaf
- Compatible, when cured, with all of IKO Hyload High-Performance Damp Proof Course range.

Application

- Consult IKO technical datasheet for guidelines on specific waterproofing applications
- All surfaces must be clean, dry and free from grease, oil, dirt and loose materials
- Concrete surfaces should be brushed or floated, masonry should be stable and flush pointed
- Metal surfaces must be suitably prepared and primed with a rust inhibitive primer
- Any hollows in the structure must be filled to an even smooth finish with cement mortar and all sharp projections removed
- Apply IKOpro Synthaprufe LAC with a stiff brush and work into the surface
- When it is completely dry it should be covered with a minimum 50mm sand/cement floor screed.

Coverage

- Metal surfaces, 1st coat 2.5 m²/litre, 2nd coat 2.5 m²/litre
- All other surfaces, 1st coat 1.5 m²/litre, 2nd coat 2.5 m²/litre surface.

Product	Size	Code
IKOpro Synthaprufe LAC	5L	MW686615
	25L	MW686617

IKOpro Synthaprufe Trade

Waterproof rubberised bitumen emulsion.

IKOpro Synthaprufe Trade is easy to apply, for damp proofing of concrete floors, foundations and masonry walls.

IKOpro Synthaprufe Trade is cold applied with a brush, making it an easy and cost effective solution.



Use

- As a damp proof membrane on solid concrete floors
- For damp proofing of interior masonry wall surfaces
- To protect retaining wall structures.

Application

- Consult IKO technical datasheet for guidelines on specific waterproofing applications such as; damp proofing floors, damp proofing walls and on external retaining walls
- The substrate needs to be sound, clean and grease-free
- Stir IKOpro Synthaprufe Trade well and apply by brush evenly and in one direction.

Coverage

- Floors: 1st coat 1 m²/litre, 2nd coat 1.5 m²/litre
- Walls: 2 m²/litre (per coat).

Product	Size	Code
IKOpro Synthaprufe Trade	2.5L	MW943902
	5L	MW943905
	25L	MW943925

Finish & Protection

IKOpro Paving & Patio Protector

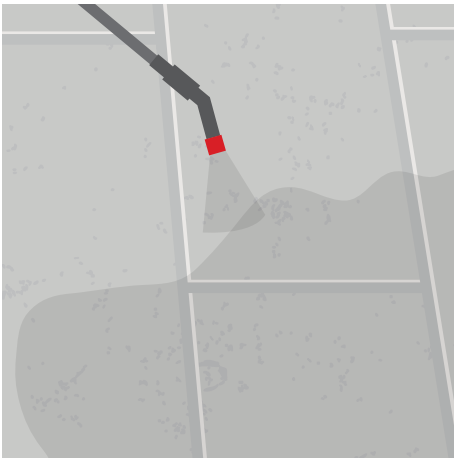
Solvent-free, water based protection for paving and patios.

IKOpro Paving and Patio Protector is a colourless, solvent-free, water based sealant, designed to protect paving and patios against most liquids, oil and grease.

It stops the growth of moss and other micro-organisms, reducing decolouration while allowing the surface to breathe. It should not be used on non-porous substrates, such as marble or blue stone.



Solvent Free



Use

- For use on porous substrates such as concrete, stone and brick.

Application

- All surfaces must be clean, dry and free from grease, oil, dirt and loose material
- Destroy any algae and fungi with **IKOpro Algae and Fungi Remover** (pg 9), and repair any weathered joints
- Apply with a brush, roller or low pressure sprayer or airless gun (open to 0.025 inch). Application temperature should be between +10 and +35°C. The protector should not be applied during periods of rain and frost.

Coverage

- 5 litres covers between 1.25 to 5 m².

Product	Size	Code
IKOpro Paving & Patio Protector	5L	MW943400

**IKO PLC**

Appley Lane North
Appley Bridge
Wigan
Lancashire WN6 9AB
www.ikogroup.co.uk

**Member of the
IKO Group**

Sales Support

t: 01257 256 865
f: 01257 251 855
sales.uk@iko.com

Technical Services

t: 01257 256 864
technical.uk@iko.com

Northern Ireland

14 Sanda Road
Whitehouse, Newtownabbey
County Antrim BT37 9UB

t: 028 9086 7079
f: 028 9086 9079
waterproofing@iko-ni.com
www.iko-ni.com

Ireland

502 Northwest Business Park
Ballycoolin
Dublin 15

t: 01 8855 090
f: 01 8855 858
waterproofing@iko.ie
www.iko.ie

March 20

Whilst every care is taken to see that the information given in this literature is correct and up to date it is not intended to form part of any contract or give rise to any collateral liability, which is hereby specifically excluded. Intending purchasers of our materials should therefore verify with the company whether any changes in our specification or application details or otherwise have taken place since this literature was issued.

