



# HOODED SLATE VENTILATOR RANGE

## 20 YEAR GUARANTEE

The slate vent range comprises of hooded ventilators designed for a range of applications. Suitable for both new build and refurbishment.

### FEATURES AND BENEFITS

- Roof space ventilation to avoid damage and decay caused by condensation
- No batten cutting necessary
- Simple to install
- Acid rain resistant and UV stabilised
- Optional adaptor for pipe connection
- Grey colour available on request

### APPLICATION

- Minimum rafter pitch of 22.5° or 25° depending on head lap.
- Suitable for batten or sark board fixing
- High or low level roof space ventilation
- Soil ventilation and mechanical extraction

### MATERIAL AND DIMENSIONS

Polypropylene

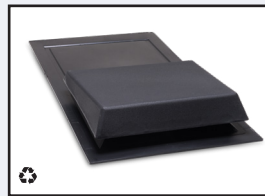
### TECHNICAL INFORMATION

- Provides compliance with BS 5250 and BS 5534

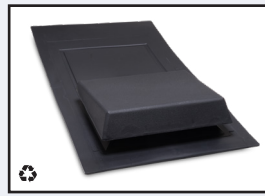
Product Code	SRV5U	SRV10U	SRV10/20	SRV680
<b>Airflow Resistance</b>				
Flow Rate (l/s)	Pressure (Pa)			
15	12.8	4.6	4.6	3.7
30	48	19.6	19.6	18
60	175	74	74	52
<b>Ventilator Spacing</b>				
Area Opening Equivalent (mm)	Fit at Centres (mm)			
5	1000	2000	2000	4000
10	500	1000	1000	2000
25	200	400	400	800



**PRODUCT CODE:** HD SRV5U  
**VENTILATION AREA:** 5000mm<sup>2</sup>  
**INSTALLATION:** Designed to suit 600mm x 300mm slates. Guidelines on the base of the vent allows for trimming to suit 500mm x 250mm slates. Not suitable for mechanical extraction.



**PRODUCT CODE:** HD SRV10/20  
**VENTILATION AREA:** 10000mm<sup>2</sup>  
**INSTALLATION:** Designed to suit 500mm x 250mm slates



**PRODUCT CODE:** HD SRV10U  
**VENTILATION AREA:** 10000mm<sup>2</sup>  
**INSTALLATION:** Designed to suit 600mm x 300mm slates. Guidelines on the base of the vent allows for trimming to suit 500mm x 250mm slates.



**PRODUCT CODE:** HD SRV680  
**VENTILATION AREA:** 20000mm<sup>2</sup>  
**INSTALLATION:** Ideal for projects with randomly laid slate or diminishing courses. Can be trimmed to 600mm x 300mm base size.

Both back and front of the Slate Vents contain up to 70% recycled PPC

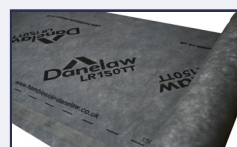
### RELATED PRODUCTS



**Soil Pipe Adaptor Kit**  
 Code: HD SPA connects standard 110mm pipework to HD SRV10U and SRV10/20 vents  
 Code: HD SPA680 connects standard 110mm pipework to HD SRV680 vent



**CON6+ Universal Ridge & Hip System**  
 Includes a ventilated dry fix membrane with broad corrugated adhesive strips, patented gaskets, stainless steel straps and fixing screws, code: HD CON6



**Tile & Slate Breathable Roofing Underlays**  
 Available in four weights, two with optional integral lap tapes and widths of 1.0m or 1.5m, codes: DLR120, DLR120TT, DLR135, DLR150, DLR150TT and DLR180

