

FLUSH FIT SLATE VENTILATOR RANGE

20 YEAR GUARANTEE

The slate vent range comprises of discreet flush fitting ventilators designed for a range of applications to complete an uninterrupted roofscape. Suitable for both new build and refurbishment.

FEATURES AND BENEFITS

- Roof space ventilation to avoid damage and decay caused by condensation
- No batten cutting necessary
- Simple to install
- Acid rain resistant and UV stabilised
- Optional adaptor for pipe connection
- Grey colour available on request

APPLICATION

- Minimum rafter pitch of 22° or 25° depending on head lap.
- Suitable for batten or sark board fixing
- High or low level roof space ventilation
- Soil ventilation and mechanical extraction

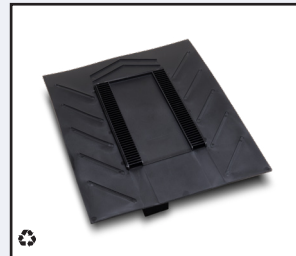
MATERIAL AND DIMENSIONS

Polypropylene

TECHNICAL INFORMATION

- Provides compliance with BS 5250 and BS 5534
- Actual ventilation area 10000mm²

Product Code	ILSRV10U	ILSRV10/20	ILSRV10/24
Airflow Resistance			
Flow Rate (l/s)	Pressure (Pa)		
15	8	10	10
30	29	39	39
60	115	157	157
Ventilator Spacing			
Area Opening Equivalent (mm)	Fit at Centres (mm)		
5	2000	2000	2000
10	1000	1000	1000
25	400	400	400



PRODUCT CODE: HD ILSRV10U
INSTALLATION: This design accommodates 600mm x 300mm, 500mm x 250mm and 450mm x 230mm slate sizes.
 * Batten cutting required




PRODUCT CODE: HD ILSRV10/20
INSTALLATION: Designed to be fitted without the need to cut battens. This design accommodates 500mm x 250mm slates.




PRODUCT CODE: HD ILSRV10/24
INSTALLATION: Designed to be fitted without the need to cut battens. This design accommodates 600mm x 300mm slates.

♻️ Both back and front of the Slate Vents contain up to 70% recycled PPC


RELATED PRODUCTS



Soil Pipe Adaptor Kit
 Code: HD ILSPA connects standard 110m pipework to HD ILSRV10/20 and ILSRV10/24
 Code: HD ILSPAU connects standard 110m pipework to HD ILSRV10/U vent



CON6+ Universal Ridge & Hip System
 Includes a ventilated dry fix membrane with broad corrugated adhesive strips, patented gaskets, stainless steel straps and fixing screws, code: HD CON6



Tile & Slate Breathable Roofing Underlays
 Available in four weights, two with optional integral lap tapes and widths of 1.0m or 1.5m, codes: DLR120, DLR120TT, DLR135, DLR150, DLR150TT and DLR180

Ref: HD_FlushFitSlateVents_DatasheetVs2_Mar22