

## PAN8 KEY INFORMATION

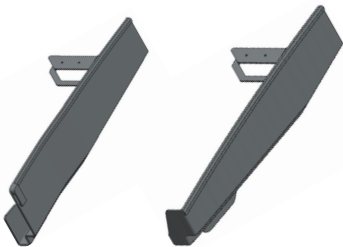


Overall Length	425mm
Hanging Length	398mm
Overall Width	390mm
Cover Width	367mm
Mass (approx.)	4.9kg

COLOURS
Grey
Brown
Red

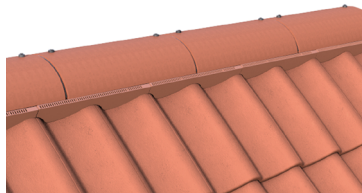
	PITCH	BATTEN SPACING	HEADLAP	TILES PER M <sup>2</sup>	BATTEN PER M <sup>2</sup>	MASS PER M <sup>2</sup>	NAIL SIZE
PAN8	25°-75°	345mm max 320mm min	75mm min	7.90/m <sup>2</sup>	2.90lm	38.70kg	45mm x 3.35mm
			100mm max	8.51/m <sup>2</sup>	3.13lm	41.72kg	

### VERGE SYSTEM



Format: Individual Units (25mm taller than SL8 units)  
 Coverage: 3.2m - 3.4m  
 Left and Right hand packs available.  
 Starter packs include eaves unit & foam  
 10 units per continuation pack

### RIDGE SYSTEM



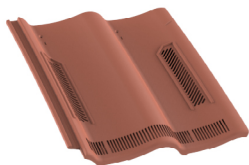
Coverage: 6m Pack  
 Use with: Half Round or Uni Angle Ridge (NH)  
 5000mm<sup>2</sup>/linear metre free vent area  
 Pitch limits: 25° - 55°

### TILE CLIPS



Packs of 100  
 Tile to Tile Clip.  
 Made from plastic

### VENT TILES



Air Vent - Vent Tile Only  
 Soil Vent - Vent Tile, 160mm flexi pipe  
 12275mm<sup>2</sup> Free Vent Area  
 Pitch Limits: 25° - 55°

### HIP SYSTEM



**Coverage:** 6m Pack  
 Use with: Third Round or Uni Angle Hips (NH)  
 Not Ventilated  
 Pitch Limits: 25° - 55°

### PERIMETER CLIPS



Packs of 50  
 Nails to batten through tile  
 Comes with dry verge packs  
 Made from plastic

# PAN8 PRODUCT CODES

## TILES & FITTINGS

Description	Product Code
PAN8 Tile Pkd Full Pallet	BUZ/7919/PAN8/--
PAN8 Tile Pkd Half Pallet	BUZ/7919/PANH/--

## SUITABLE RIDGE/HIP TILES

Description	Product Code
Ridge Half Round (450mm)	BUZ/7935/0516/--
Ridge Half Round Nailhole (450mm)	BUZ/7935/D516/--
Ridge Half Round Block End (450mm)	BUZ/7940/D524/--
Ridge Universal Angle (450mm)	BUZ/7935/U516/--
Ridge Universal Angle Nailhole (450mm)	BUZ/7935/UD16/--
Ridge Uni Angle Block End (450mm)	BUZ/7940/U524/--
Ridge Half Round Mono (450mm)	BUZ/7940/0300/--
Ridge HR Mono Block End LH (450mm)	BUZ/7940/0324/--
Ridge HR Mono Block End RH (450mm)	BUZ/7940/0325/--
Ridge Scrolltop Half Round (450mm)	BUZ/7940/HR30/--
Ridge Scrolltop HR Block End (450mm)	BUZ/7940/HR29/--
Ridge Half Round Baby (300mm)	BUZ/7940/0020/--
Ridge Angle Baby (300mm)	BUZ/7940/0019/--
Hip Third Round (450mm)	BUZ/7935/0566/--
Hip Third Round Nailhole (450mm)	BUZ/7935/D566/--
Hip Third Round Block End (450mm)	BUZ/7940/D526/--
Hip Universal Angle (450mm)	BUZ/7935/U566/--
Hip Universal Angle Nailhole (450mm)	BUZ/7935/UD66/--
Hip Uni Angle Block End (450mm)	BUZ/7940/U526/--

## ANCILLARY PRODUCTS

Description	Product Code
PAN8 Verge Pk LH (10 units)	BUZ/7956/P8VL/--
PAN8 Verge Pk RH (10 units)	BUZ/7956/P8VR/--
PAN8 Verge Starter & Ridge Pk	BUZ/7956/P8VS/--
PAN8 Vented Ridge Pk (6m)	BUZ/7956/P8T5/--
Vented HR Monoridge Pk (6m)	BUZ/7951/P8M5/--
PAN8/V2/Centurion Hip Pk (6m)	BUZ/7956/P8DH/00
PAN8 Air Vent Kit	BUZ/7956/P8IV/--
PAN8 Soil Vent Kit (inc. flexipipe)	BUZ/7956/P8SV/--
Eaves Vent Starter Pk (6m)	BUZ/7955/U5E5/00
Eaves Vent Starter Pk (6m)	BUZ/7955/U5E7/00
PAN8 Tile Clips (Pk 100)	BUZ/7956/P852/00
SL8/PAN8 Perimeter Clips (Pk 50)	BUZ/7956/VC53/--
PAN8 Verge Bulk Pk LH (128 units)	BUZ/7956/PVBL/--
PAN8 Verge Bulk Pk RH (128 units)	BUZ/7956/PVBR/--
PAN8 Verge Starter Pk (20 units EH)	BUZ/7956/PVSB/--

## PLAIN TILES (FOR VERTICAL TILING)

Description	Product Code
Plain Tile	BUZ/7907/P501/--
Plain Tile & Half	BUZ/7945/P507/--
Plain Tile Eaves & Tops	BUZ/7945/P506/--
Beavertail Tile	BUZ/7930/BT01/--
Beavertail RH Tile & Half	BUZ/7945/BT08/--
Beavertail LH Tile & Half	BUZ/7945/BT07/--
Plain Tile Bonnet Hip	BUZ/7950/PT13/--
90 Deg LH Ext Angle	BUZ/7950/PT11/--
90 Deg RH Ext Angle	BUZ/7950/PT12/--
135 Deg LH Ext Angle	BUZ/7950/PT31/--
135 Deg RH Ext Angle	BUZ/7950/PT32/--

