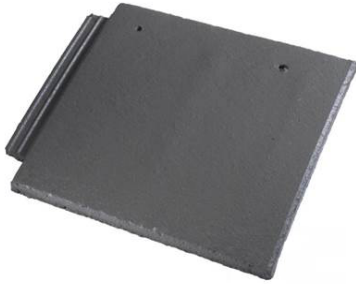


MINISLATE KEY INFORMATION



Overall Length	270mm
Hanging Length	243mm
Overall Width	337mm
Cover Width	316mm
Mass (approx.)	2.8kg

COLOURS
Grey
Welsh Blue (Made to order)

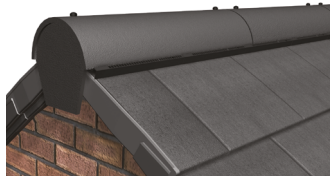
	PITCH	BATTEN SPACING	HEADLAP	TILES PER M ²	BATTEN PER M ²	MASS PER M ²	NAIL SIZE
Minislate	22.5°-29.5°	190mm max 175mm min	80mm min	16.66/m ²	5.26lm	47.47kg	45mm x 3.35mm
			95mm max	18.08/ m ²	5.71lm	51.54kg	
	30°-70°	195mm max 175mm min	75mm min	16.23/m ²	5.13lm	46.25kg	
			95mm max	18.08/m ²	5.71lm	51.54kg	

VERGE SYSTEM



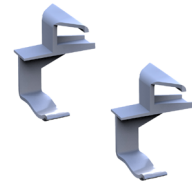
Format: Individual Units
Coverage: 2.6m - 2.9m
Left and Right Hand Packs Available
Starter / End Parts included
15 Units per pack

RIDGE SYSTEM



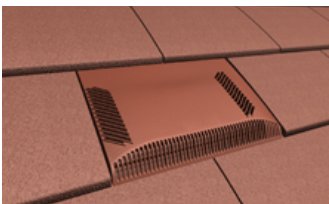
Coverage: 6m Pack
Use with: Half Round or Uni Angle Ridge (NH)
5000mm²/linear metre free vent area
Pitch limits: 22.5° - 55°

TILE CLIPS



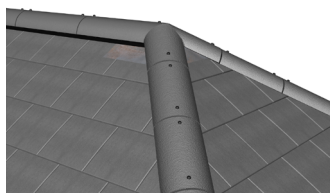
Packs of 100
Tile to Tile Clip
Made from Plastic

VENT TILES



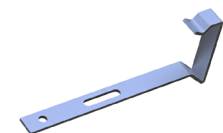
Air Vent - Vent Tile Only
Soil Vent - Vent Tile, 110mm flexi pipe
7860mm² Free Vent Area
Pitch Limits: 22.5° - 55°

HIP SYSTEM



Coverage: 6m Pack
Use with: Third Round or Uni Angle Hips (NH)
Not Ventilated
Pitch Limits: 22.5° - 55°

VERGE CLIPS



Packs of 50
Nails to batten
Use with: mortar bedded verge
Made from Stainless Steel

MINISLATE PRODUCT CODES

TILES & FITTINGS	
Description	Product Code
Minislate Tile	BUZ/7917/M5S1/--
Minislate Tile & Half	BUZ/7941/M5S8/--

SUITABLE RIDGE/HIP TILES	
Description	Product Code
Ridge Half Round (450mm)	BUZ/7935/0516/--
Ridge Half Round Nailhole (450mm)	BUZ/7935/D516/--
Ridge Half Round Block End (450mm)	BUZ/7940/D524/--
Ridge Universal Angle (450mm)	BUZ/7935/U516/--
Ridge Universal Angle Nailhole (450mm)	BUZ/7935/UD16/--
Ridge Uni Angle Block End (450mm)	BUZ/7940/U524/--
Ridge Half Round Mono (450mm)	BUZ/7940/0300/--
Ridge HR Mono Block End LH (450mm)	BUZ/7940/0324/--
Ridge HR Mono Block End RH (450mm)	BUZ/7940/0325/--
Ridge Scrolltop Half Round (450mm)	BUZ/7940/HR30/--
Ridge Scrolltop HR Block End (450mm)	BUZ/7940/HR29/--
Ridge Half Round Baby (300mm)	BUZ/7940/0020/--
Ridge Angle Baby (300mm)	BUZ/7940/0019/--
Hip Third Round (450mm)	BUZ/7935/0566/--
Hip Third Round Nailhole (450mm)	BUZ/7935/D566/--
Hip Third Round Block End (450mm)	BUZ/7940/D526/--
Hip Universal Angle (450mm)	BUZ/7935/U566/--
Hip Universal Angle Nailhole (450mm)	BUZ/7935/UD66/--
Hip Uni Angle Block End (450mm)	BUZ/7940/U526/--

ANCILLARY PRODUCTS	
Description	Product Code
GM/MS Verge Pk LH (15 units)	BUZ/7951/G6VL/--
GM/MS Verge Pk RH (15 units)	BUZ/7951/G6VR/--
SL8/GM/MS Vented Ridge Pk (6m)	BUZ/7951/GMT5/--
Vented HR Monoridge Pk (6m)	BUZ/7951/G6M5/--
SL8/Gemini/Minislate Hip Pk (6m)	BUZ/7951/DH66/00
Minislate Air Vent Kit	BUZ/7955/M5IV/--
Minislate Soil Vent Kit (inc.flexipipe)	BUZ/7955/M5IS/--
Eaves Vent Starter Pk (6m)	BUZ/7955/U5E5/00
Eaves Vent Extension Pk (6m)	BUZ/7955/U5E7/00
GM/MS Tile Clips (Pk 100)	BUZ/7951/G552/00
GM/MS/CEN/SEN Verge Clips (Pk 50)	BUZ/7961/0053/00
GM/MS Verge Bulk Pk LH (75 units)	BUZ/7951/GVBL/--
GM/MS Verge Bulk Pk RH (75 units)	BUZ/7951/GVBR/--
GM/MS Air Vent Bulk Pk (10 vents)	BUZ/7955/GAVB/--
GM/MS Soil Vent Bulk Pk (10 vents)	BUZ/7955/GSVB/--
GM/MS Tile Clips Bulk Pk (Pk 1000)	BUZ/7951/G654/00

PLAIN TILES (FOR VERTICAL TILING)	
Description	Product Code
Plain Tile	BUZ/7907/P501/--
Plain Tile & Half	BUZ/7945/P507/--
Plain Tile Eaves & Tops	BUZ/7945/P506/--
Beavertail Tile	BUZ/7930/BT01/--
Beavertail RH Tile & Half	BUZ/7945/BT08/--
Beavertail LH Tile & Half	BUZ/7945/BT07/--
Plain Tile Bonnet Hip	BUZ/7950/PT13/--
90 Deg LH Ext Angle	BUZ/7950/PT11/--
90 Deg RH Ext Angle	BUZ/7950/PT12/--
135 Deg LH Ext Angle	BUZ/7950/PT31/--
135 Deg RH Ext Angle	BUZ/7950/PT32/--