

V2 Key Information



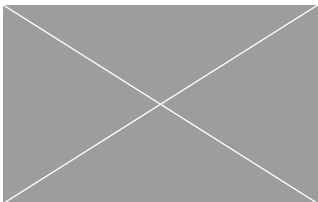
Overall Length	385mm
Hanging Length	360mm
Overall Width	230mm
Cover Width	200mm
Mass (approx.)	2.95kg (Smooth)

Colours

Grey
Brown
Autumn
Red

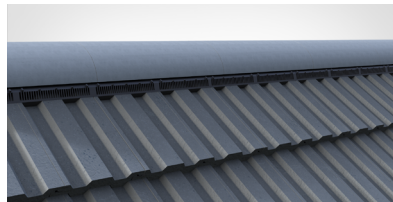
	Pitch	Batten Spacing	Headlap	Tiles Per m ²	Batten Per m ²	Mass Per m ²	Nail Size
V2 Smooth	17.5°-70°	310mm max 285mm min	75mm min 100mm max	16.13m ² 17.54/m ²	3.23lm 3.51lm	47.58kg 51.75kg	50mm x 3.35mm

Verge System



Mortar Bedded Only
Verge Clips available

Ridge System



Coverage: 3m Pack
Use With: Half Round or Uni Angle Ridge (NH)
5000mm²/linear metre free vent area
Pitch Limits: 17.5° - 55°

Tile Clips



Packs of 100
Made from Plastic
Nails to batten using
50x3.35mm nails (not supplied)

Vent Tiles



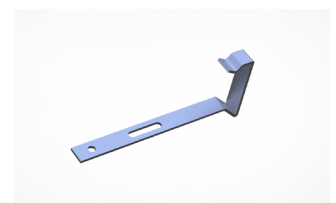
Air Vent - Vent Tile Only
Soil Vent - Vent Tile, 160mm flexi pipe
12275mm² Free Vent Area
Pitch Limits: 17.5° - 55° (Smooth)

Hip System



Coverage: 6m Pack
Use With: Third Round or Uni Angle Hips (NH)
Not Ventilated
Pitch Limits: 17.5° - 55°

Verge Clips



Packs of 50
Nails to batten
Use with mortar bedded verge
Made from Stainless Steel

V2 Product Codes

Tiles & Fittings

Description	Product Code
V2 Smooth Tile	BUZ/7909/V201/--

Ancillary Products

Description	Product Code
V2 Vented Ridge Pk (3m)	BUZ/7951/V2T5/--
V2 Air Vent Kit	BUZ/7955/V2IV/--
V2 Soil Vent Kit (inc. flexipipe)	BUZ/7955/V2IS/--
Eaves Vent Starter Pk (6m)	BUZ/7955/U5E5/00
Eaves Vent Extension Pk (6m)	BUZ/7955/U5E7/00
V2 Tile Clips (Pk 100)	BUZ/7951/V252/00
V2/Hardrow Verge Clips (Pk 50)	BUZ/7960/V253/00

Suitable Ridge/Hip Tiles

Description	Product Code
Ridge Half Round (450mm)	BUZ/7935/0516/--
Ridge Half Round Nailhole (450mm)	BUZ/7935/D516/--
Ridge Half Round Block End (450mm)	BUZ/7940/D524/--
Ridge Universal Angle (450mm)	BUZ/7935/U516/--
Ridge Universal Angle Nailhole (450mm)	BUZ/7935/UD16/--
Ridge Uni Angle Block End (450mm)	BUZ/7940/U524/--
Ridge Half Round Mono (450mm)	BUZ/7940/0300/--
Ridge HR Mono Block End LH (450mm)	BUZ/7940/0324/--
Ridge HR Mono Block End RH (450mm)	BUZ/7940/0325/--
Ridge Scrolltop Half Round (450mm)	BUZ/7940/HR30/--
Ridge Scrolltop HR Block End (450mm)	BUZ/7940/HR29/--
Ridge Half Round Baby (300mm)	BUZ/7940/0020/--
Ridge Angle Baby (300mm)	BUZ/7940/0019/--
Hip Third Round (450mm)	BUZ/7935/0566/--
Hip Third Round Nailhole (450mm)	BUZ/7935/D566/--
Hip Third Round Block End (450mm)	BUZ/7940/D526/--
Hip Universal Angle (450mm)	BUZ/7935/U566/--
Hip Universal Angle Nailhole (450mm)	BUZ/7935/UD66/--
Hip Uni Angle Block End (450mm)	BUZ/7940/U526/--
Gemini Bonnet Hip	BUZ/7950/G513/--
Gemini Bonnet Hip Block End	BUZ/7940/G524/--

Plain Tiles (for vertical tiling)

Description	Product Code
Plain Tile	BUZ/7907/P501/--
Plain Tile & Half	BUZ/7945/P507/--
Plain Tile Eaves & Tops	BUZ/7945/P506/--
Beavertail Tile	BUZ/7930/BT01/--
Beavertail RH Tile & Half	BUZ/7945/BT08/--
Beavertail LH Tile & Half	BUZ/7945/BT07/--
Plain Tile Bonnet Hip	BUZ/7950/PT13/--
90 Deg LH Ext Angle	BUZ/7950/PT11/--
90 Deg RH Ext Angle	BUZ/7950/PT12/--
135 Deg LH Ext Angle	BUZ/7950/PT31/--
135 Deg RH Ext Angle	BUZ/7950/PT32/--