

FIXER

FLAT ROOFING

REINFORCED SINGLE PLY



FIXER

FLAT ROOFING

REINFORCED SINGLE PLY



All the information in this product sheet is based on practical experience and is published in good faith. However, because we have no control over the manner or conditions in which our products are used, or over work undertaken or end product manufactured by the purchaser, we cannot accept liability for results. Responsibility for ascertaining the suitability of products for their purposes rests with the purchaser. All conditions, representations, statements, warranties or guarantees whatsoever, whether express, implied or statutory, in respect of any goods manufactured, sold or supplied by us are hereby expressly excluded and we accept no liability in respect of any claim for damage or consequential loss caused to any property arising directly or indirectly out of the use of our products or goods. FIX-R reserves the right to change product specifications without notice. VERS 2. 08/2020

FIX-R REINFORCED SINGLE PLY

Key Features:

- Fleece reinforced for added durability
- Durable - no splits, cracks or flaws
- Promises unmatched weather resistance in all extreme temperatures
- Can easily accommodate any building movement with over 300% product flexibility
- Pre-applied seam tape for fast application
- Fast, reliable and cold applied
- Available in rolls of 1.52m x 12.2m, 18.54m²
- Lightweight - weighs 75% less than a bitumen felt system
- Ideal for repairs, renewals and new builds
- No specialist tools are required, making it a low cost installation

FIX-R Reinforced Single Ply is a synthetic rubber membrane with a polyester fleece laminated to the underside. Installation of the membrane is made easy with the enhanced adhesion characteristics that the polyester fleece offers.

FIX-R Reinforced Single Ply comes standard with Pre-applied Seam Tape, for quick and easy installation. The flexibility of the rubber membrane guarantees resistance against all extreme weather conditions, so you can be sure that you are providing your clients with an outstanding and unmatched flat roofing system.

EPDM roofing membrane

Pre-applied seam tape (PST)

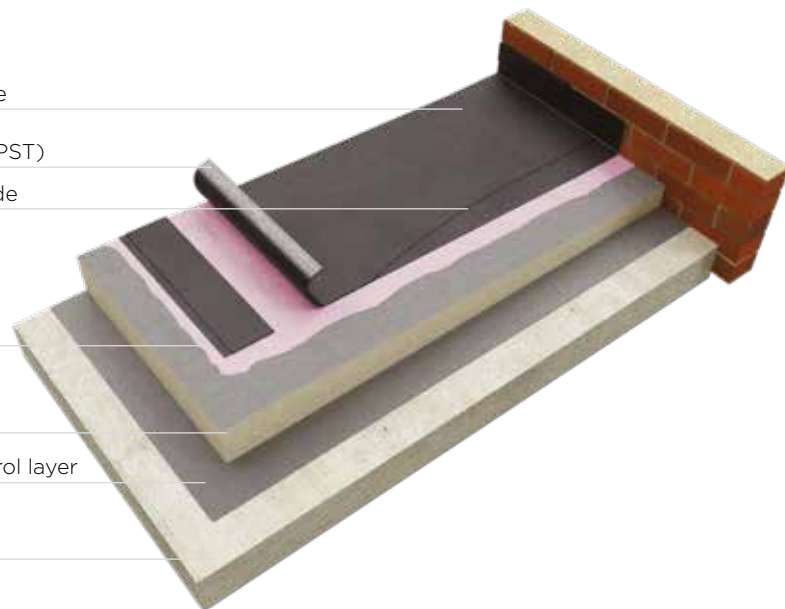
Polyester fleece underside

Decking adhesive

Acceptable PIR/PUR insulation board

Acceptable vapour control layer

Structural decking



Excellent Performance

Manufactured by the world's leading EPDM manufacturer, FIX-R Reinforced Single Ply has many valuable characteristics such as longevity, weather endurance and elasticity making it a sustainable and long lasting roofing solution.

FIX-R Reinforced Single Ply is an ideal solution for almost every commercial and domestic flat roofing project and has become a favoured system with contractors.

Originally designed to directly overlay aged bituminous roof systems, FIX-R Reinforced Single Ply has proved to be equally suited to new-build and refurbishment projects over a variety of common flat roofing substrates. The product easily bends with no strain to follow the contours of the roof.

FIX-R Reinforced Single Ply offers excellent protection for many types of domestic and commercial, refurbishment and new-build projects. It is also the perfect choice for use with balconies, patios, garages and extensions. The membrane is unaffected by extreme weather conditions and has 180% greater tear resistance and 40% greater puncture resistance than that of comparable non-fleece reinforced roof membranes.

FIX-R Reinforced Single Ply flat roofing system does not shrink over time meaning it is a reliable, cost effective and long term solution, something that standard EPDM cannot offer, making it the perfect choice for your flat roofing projects.

The membrane is specially designed to be used as an overlay system on existing roofs and can overcome the imperfections associated with them. Eliminating the need to pull up the existing roof makes the application of FIX-R Reinforced Single Ply a more cost effective and time saving solution.

SYSTEM COMPONENTS



FIX-R Reinforced Single Ply



FIX-R Roof Deck Adhesive (WBA)*

This high strength, low odour, water based acrylic adhesive is specifically designed for use with FIX-R Reinforced Single Ply applied to deck surfaces.

Features:

- Available in 2.5L (7 - 8.3m² coverage), 5L (14 - 16.6m² coverage) and 15L pails (42 - 50m² coverage).
- Designed to be roller applied to flat roof surfaces.



FIX-R Bonding Adhesive*

A high strength, solvent based bonding adhesive, specifically designed and manufactured for flat roofing installations. Perfect for bonding FIX-R Reinforced Single Ply to horizontal and vertical surfaces. Suitable for a range of surfaces e.g. timber, brickwork, metal and concrete.

Features:

- Available in 1L (1.5 - 2 m² coverage), 2.5L (4 - 5m² coverage) and 5L (8 - 10m² coverage).
- Designed to be roller applied to the substrate and sheet backing.

*Refer to Adhesive Table for compatibility.



FIX-R EPDM Primer

FIX-R EPDM Primer is a solvent based product designed for one step cleaning and priming of Reinforced Single Ply and other suitable surfaces prior to the application of FIX-R Pressure Sensitive (PS) accessories such as 76mm PS Secure Tape, 152mm PS Cover Strip, 228mm or 304mm PS Uncured Flashing, PS Pipe Seals and PS Walkway Pads.

Features:

- Available in 0.5L and 1L containers.



FIX-R Sprayable PU Canister*

Sprayable PU Adhesive allows the professional Roofing Contractor to securely bond FIX-R Reinforced membranes to a range of common flat roof substrates including plywood, OSB3, concrete, PIR/PUR tissue faced insulation, steel, existing bitumen layer etc.

Features:

- 4 x Faster application than roller applied PU.
- Reduced applicator strain.
- Up to 180m² coverage/canister (dependant on substrate).
- Read TDS & SDS prior to use.



FIX-R 5L PU Deck Adhesive*

FIX-R 5L PU Deck Adhesive is a versatile alternative to WBA Adhesive. It can be used to bond FIX-R Reinforced Membranes to a range of common flat roof substrates including plywood, OSB3, concrete, PIR/PUR tissue faced insulation, steel, existing bitumen layer etc.

Features:

- 5L can covers up to 22m².
- Roller Applied.
- Read TDS & SDS prior to use.



FIX-R SPB Adhesive*

An alternative to standard bonding adhesive for membrane attachment to upstands and detailing. SPB adhesive is a spray applied, high-strength adhesive, formulated especially for gun application and bonding Reinforced Single Ply to a variety of substrates.

*Refer to Adhesive Table for compatibility.



FIX-R 152mm Pressure Sensitive (P.S.) Cover Strip

FIX-R 152mm PS Cover Strip is used for stripping in metal edging, drip edges, gravel stops and fastening plates. This tape consists of a 1.52mm semi cured EPDM strip laminated to a 0.76mm fully cured synthetic rubber based pressure sensitive adhesive.

Features:

- 152mm by 30.5m long rolls.
- Resists tearing, cracking and abrasion in all weather conditions.
- Can be used when seaming with FIX-R 76mm PS Secure Tape is not possible.
- Must be used with FIX-R EPDM Primer.



FIX-R 228mm or 304mm Pressure Sensitive (P.S.) Uncured Flashing Tape

FIX-R PS Uncured Flashing Tape is easily moulded and highly adaptable to irregular shapes and surfaces. This self-curing tape is ideal for flashing and waterproofing of roof details such as pipes, corners, outlets and other penetrations.

Features:

- 228mm or 304mm wide by 15.25m long rolls.
- Easily adaptable to irregular shapes and surfaces.
- Must be used with FIX-R EPDM Primer.

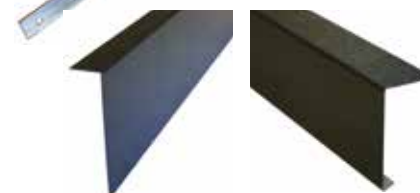


FIX-R Pressure Sensitive (P.S.) Pipe Seals

FIX-R PS Pipe Seals are available in two sizes - small 12.5mm - 76mm and large 25 - 152mm in diameter. FIX-R Pipe Seals are cured, pre-moulded Flashings for round flat roof penetrations, with pre-applied secure tape to the base and a stainless steel clamping ring.

Features:

- Pre-applied Secure Tape on the base of the pipe seal allows fast and simple application.
- Ribbed collar for accurate cutting to pipe size.
- Stainless steel clamping ring.
- Must be used with FIX-R EPDM Primer.



Built-in-batten



Standard back plate

FIX-R 75-175mm Plastisol Steel Edge Trim & Termination Bars

For creating a high quality finishing edge to the roof perimeter. Available as 100mm wall flashing and 75 - 175mm deep perimeter trim. The wall trims offer an economical alternative to lead and are less susceptible to theft. Each trim is 3 metres long, fixed in to the wall with RB fasteners.

Perimeter trims feature a drip return on the bottom, with a range of sizes available. Termination Bars are used to create a compression seal to upstands if cutting a chase isn't possible and as a compression to neighbouring roof systems.

Features:

- 3 metre lengths for efficient installation.
- Clean, simple finish to the flat roofing system.

FIX-R RB Trim Fasteners

Trim fasteners are colour matched, low profile fasteners complete with an EPDM Washer to create a watertight seal. Used when mechanically fixing wall trims and edge trims.

Features:

- 40mm lengths.
- Low profile, colour coded to match Plastisol Trims.

FIX-R Check Kerb Trim

Fast and easy to install with a pre-applied water seal. FIX-R trims are solid cored for strength which removes the need and cost of additional caps used in hollow trims.

Features:

- Black, White or Anthracite with smooth, gloss appearance.
- Pre-applied water seal and pre-drilled fixing holes.
- Market leading quality.

FIX-R Gutter Trim - Built-in-Batten or Standard Back Plate

FIX-R Gutter Trim is fast and easy to install with a pre-applied water seal on the clamping trim. A choice of 'Built-in-Batten' saving the time and cost of an additional timber back plate or 'Standard' back plate which is fitted to the existing batten drip edge.

The two part drip edge trim securely clamps the membrane by mechanically fixing and prevents warping or popping experienced with 'clip in' systems. The outer trim section features a built in water seal to accommodate different thickness membranes, seams and detail flashings.

Features:

- Black, White and Anthracite with smooth, gloss appearance.
- Pre-applied water seal and pre-drilled fixing holes.
- Choice of back plate thicknesses.



FIX-R Corners and Joiners

Both FIX-R Gutter Trim and FIX-R Check Kerb Trim systems have joiners, internal corners and external corners, to allow for all roof details.

Kerb and Gutter Joiners

The joiners simply clip into place, made from the same gloss finish uPVC, creating a neat, seamless appearance.

External Corners

Both the gutter and check kerb have external corners details in Black, White and Anthracite. These components make the detailing of roof perimeters fast and easy without having to make any compromise.

Internal Corners

Both the gutter and check kerb have internal corners in Black, White and Anthracite. These components make the detailing of roof perimeters fast and easy, saving the need and time of trying to manufacture neat corners on site. Corners are either glued or fixed in position.

FIX-R Roof Outlets

The FIX-R range of outlets provide the installer with a fast, effective method of detailing to flat roof outlets.

FIX-R 68mm Flat Roof Outlet

The pre-formed 68mm outlet is a fast, efficient method of connecting FIX-R flat roofing systems to existing 68mm internal rainwater pipes on domestic and small commercial roofs. Sealed to the membrane with FIX-R 228mm or 304mm PS Uncured Flashing Tape and FIX-R EPDM Primer.

FIX-R Horizontal Roof Outlet

The horizontal roof outlet is designed as an outlet through parapet walls and pitched roofs as well as the potential to be used as a vertical drain in box gutters. Sealed to the membrane with FIX-R 228mm or 304mm PS Uncured Flashing Tape and FIX-R EPDM Primer.



FIX-R 110mm Top Drain

Top drains give a fast, clean and secure method of joining FIX-R EPDM Membranes to 110mm rainwater pipes for larger flat roofs and commercial properties. The outlet is sealed to the EPDM Membrane with the integral clamping ring and FIX-R Water Cut-Off Mastic. Fleece must be removed from FIX-R with an electric heat gun to ensure watertight seal.

FIX-R Water Cut-Off Mastic

For use in a compression termination, this one part mastic is used in a variety of situations where a compression termination of the FIX-R Reinforced Single Ply Membrane is required.

Features:

- Each tube covers 3 linear metres. This is only to be used as a compression type mastic, not as a sealant for wall chases or gaps.
- Must be used in conjunction with the appropriate fasteners for the substrate.

FIX-R Lap Sealant

The FIX-R Lap Sealant mastic cures off to give a tough rubber consistency. Ideal for sealing wall chase details and using as a finishing bead to compression type joints, it should also be used to protect the edges of 228mm/304mm PS Uncured Flashing Tape from water infiltration during curing.

Features:

- Fast, clean, simple finish to the flat roofing system.

FIX-R REINFORCED SINGLE PLY				
Substrate	WBA*	Bonding Can	Bonding Canister / Aerosol	PU Can / Canister
OSB3 / Suitable Plywood	✓	✓	✓	✓
Glass Tissue Faced Insulation	X	✓	✓	✓
Asphalt **	✓	X	✓	✓
Bituminous Membranes**	✓	X	✓	✓
Metals	X	✓	✓	✓
Concrete	X	✓	✓	✓
Suitable GRP	X	✓	✓	✓

*4°C & rising (min 24hrs)

INSTALLATION GUIDE

Simple steps to guarantee a fast, simple and expert installation.
For a list of supporting accessories and Installation Guide, visit www.fix-r.co.uk.



Membrane Installation

- When the substrate is prepared the installation of the FIX-R Reinforced Single Ply System can proceed.
- Carefully measure and cut the FIX-R Reinforced Single Ply membrane to length. Allow sufficient material to accommodate any overhangs or upstands. Position the membrane, mark the areas to apply adhesive onto the roof deck, and roll or fold the membrane to its mid-point.
- Apply the adhesive in accordance with the relevant guidance detailed below. This will vary dependant on the adhesive type used for the particular application.
- When the adhesive application is complete, roll or lay the membrane into position over the adhesive.
- From the mid-point, using a squeegee, apply light pressure to the membrane surface and press the membrane into the adhesive. The membrane must be fully adhered with no voids or bridging. Repeat the process to complete the remaining area.
- Ensure a minimum of 76mm overlap occurs between adjacent sheets.

Bonding Adhesive

- FIX-R Bonding Adhesive is used at all upstand angle changes, vertical surfaces, and inclines greater than 15°. The substrate must be clean & dry. The adhesive is compatible with most common roof substrates.
- Apply the adhesive to both the substrate and reverse of the membrane. Allow for the solvents to dissipate.
- When ready, and the adhesive no longer transfers to a gloved finger when pressure is applied, install the membrane to the substrate. Ensure the membrane is fully adhered with no voids or bridging, and consolidate the bond with a roller.



Membrane Splicing Pre-applied Seam Tape (PST)

- Once the membrane has been adhered to the field areas and upstands, the seaming process can be undertaken.
- If the areas to be seamed have become contaminated with dust or debris during the installation process, ensure they are clean before proceeding.
- Mark the seam overlap on the lower sheet, or apply a suitable tape to mask the boundary to which the primer is to be applied. When completed primer must be visible beyond the seam along the entire length.
- Fold back the PST on the top sheet to expose the area to be primed on the lower sheet and apply the FIX-R EPDM Primer using a scrubbing pad, roller or brush.
- Touch test the primer to ensure it is ready to receive the PST. When flashed off, allow the PST (still protected with the cellophane) to lay over the primed area where the seam will be bonded.
- Remove the cellophane gradually at a 45° angle, smoothing the PST into the primed area. Pressure should be applied across the seam from inside the sheet to outside.
- Once positioned, the seam must be rolled with a 50mm steel roller across width of the entire seam, not parallel to it.
- A 228mm PS Cover Patch is required at any upstand angle changes applied at the base of the direction change and where either PST or 152mm PS Cover Strip intersect.



152mm PS Cover Strip

- 152mm PS Cover Strip can be used to create end laps, additional seams, and to seal the membrane to metal details, such as gravel stops.
- Mark, or mask the membrane corresponding with the 152mm PS Cover Strip target area and apply FIX-R EPDM Primer.
- Touch test the primer to ensure it is ready to receive the PS Tape. When the primer has flashed off position the PS Tape, complete with cellophane backing over the target area.
- Remove approx. 0.5m of cellophane, and press the exposed PS Tape into the primed area. Continue to remove the cellophane at approx. 0.5m at a time, smoothing into the primed area with a flat hand or 50mm steel roller. Continue the process until complete.
- If the tape becomes misaligned or the roll comes to its end, cut the tape and start a new section with an overlap of 76mm. A cover patch of 228mm flashing should always be applied over this point if this occurs.
- Immediately roll the PS Tape with a 50mm metal roller, across the width of the tape, not parallel to it.
- Where 152mm PS Cover Strips intersect 228mm PS Cover Patches must always be applied.

228mm PS Uncured Flashing Tape

This tape is to be used for any detail work necessary on the roof and has the flexibility to mould to almost every shape and will adhere to a variety of surfaces, given that the surface of the area is clean, dry and correctly primed with FIX-R EPDM Primer.

All edges must be protected with FIX-R Lap Sealant if submersion of 228mm PS Flashing is likely to occur. The Lap Sealant is used to protect the PS Tape during the curing process.



Internal Corner with 228mm PS Tape

- When creating an internal corner, excess membrane at the upstand should be formed into a neat fold.
- Cut the fold vertically, 75mm from the corner to leave a flap of material.
- Cut a section of 228mm PS Uncured Flashing Tape 75mm wider than the flap of membrane and round off the point that will correspond with the base furthest from the corner as shown. Position over the flap and mark the outside edge.
- Apply FIX-R EPDM Primer to both sides of the flap, and neatly beyond the marks created.
- Touch test the primer to ensure it is ready to receive the PS Tape. When the primer has flashed off remove the cellophane, position PS Tape over the target area, and apply.
- Immediately roll the PS Tape with a 50mm metal roller.

External Corners with 228mm PS Tape

- Cut the membrane at 45° from the base of the corner upwards and bond in place with FIX-R EPDM Bonding Adhesive to create an upstand.
- Cut a section of 228mm PS Tape allowing 76mm onto deck and 50mm horizontally past angled cut in membrane 150mm above deck level. Centre the PS Tape at the corner and mark round it.
- Apply FIX-R EPDM Primer to the marked area, including the exposed substrate and allow to dry.
- Start installing the tape from the top point. Work the tape down upstands first and into the bottom angle change.
- Work the tape onto the deck around the corner and smooth out and roll the entire detail with 50mm steel roller.



Pre-Fabricated Pipe Seal

Always ensure that any areas where the pipe seal will be adhered are clean and dry.

- Cut the PS Pipe Seal above the appropriate raised 'rib' at a suitable size for the pipe diameter. Do not cut through the rib.
- Pull the pipe seal over the pipe until base flange is in contact with the membrane.
- Once this is in position, secure the seal to the pipe with the metal clamp that is supplied and mark around the base of the seal, ready to apply the primer.
- Pull the pipe seal upward on the pipe so that the membrane is exposed and apply FIX-R EPDM Primer to the membrane.
- Allow the primer to fully dry and pull the pipe seal back down over the pipe and into correct position.
- Remove the backing tape and smooth down tape onto primed area adding generous pressure while doing so.
- Roll out the splice area with a hand roller and apply 228mm uncured Patches to any areas where the pipe seal may have intersected a field splice.

Outlets & Drains

There are two simple methods for sealing to an internal drain. Pre-fabricated outlets of various types can be used for all standard outlets or an on-site process can be used for non-standard outlets.



Anti-backup drain for 68mm outlet

These roof outlets are designed to be inserted into the existing 68mm diameter down pipe and the outlet is already fitted with an anti-backup seal to create a watertight seal to the pipework. 228mm PS uncured flashing tape and Lap Sealant is used to seal the outlet to the membrane. A Leaf Grate is also available to complete the roof outlet.

- Cut back the outlet flange to leave a minimum of 50mm head and cut the membrane back to meet the border of the outlet head.
- Fit the outlet into the decking and apply the primer to both the head of the outlet and the membrane.
- Apply the uncured PS tape to the primed area and remove a 25mm diameter circle of the PS Tape corresponding with the centre of the outlet. Press the remaining tape into the outlet.
- Roll the entire flashing with a hand roller and apply Lap Sealant to any cut edges.
- Install the leaf grate to complete the 68mm flat roof outlet.

Angled Roof Drain

This process is designed for roofs that have horizontal drains to go through walls and pitched roofs. The Angled Roof Drain is installed to the deck and sealed to the membrane using 228mm PS Uncured flashing tape.

- Install the outlet to the parapet wall before installing the membrane then install the membrane over the top of the outlet with FIX-R Bonding Adhesive.
- Cut the membrane 50mm beyond the outlet opening and apply the primer to the membrane, the outlet face and into the outlet pipe.
- Apply the PS tape to the area and form tightly into the angle change applying pressure to eliminate any trapped air. This must be large enough to create a seal to the membrane by a minimum of 50mm.
- Cut a 30mm diameter circle in the centre of the tape and mould the tape into the outlet pipe to approximately 25mm.
- Roll over the tape applying pressure, taking particular care with any angle changes and inside the outlet pipe.



- Cut a second section of tape 100mm wide, this will be inserted into the outlet pipe for added strength and to reinforce the detail inside the outlet.
- Apply primer into the outlet pipe on top of the already installed tape by at least 100mm and once flashed off, install the second tape into the pipe. Roll over the second application of tape.
- Once installation is complete insert the leaf grate into the outlet.

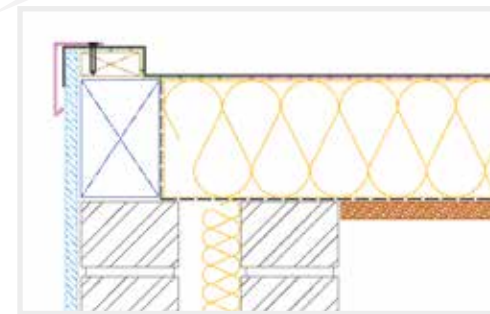


Top Drain

- The outlet must be fitted to the deck prior to the membrane being installed. Ensure the yellow Top Drain cap is in position, this helps to locate the outlet once the membrane has been installed.
- Apply the membrane to the roof and over the outlet. Locate the central pin and place the cutting guide over it. Use the cutting guide to cut round the circular plate and remove the membrane and cap.
- Remove the fleece with heat, or ensure the edge is entirely encapsulated with mastic.
- Apply a continuous 12mm bead of Water Cut Off mastic between the underside of the membrane and the drain.
- Screw down the clamping ring and ensure it is fully tightened and use the two tightening lugs to apply leverage to the ring.
- Install the leaf grate into the three locating tabs to complete the installation.



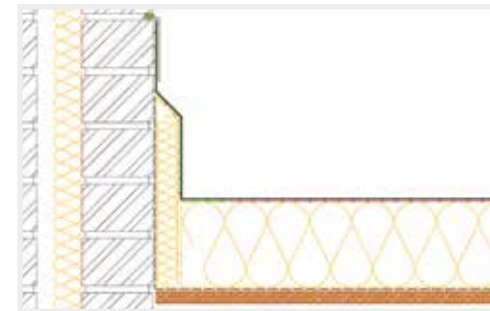
PERIMETER FINISHES



Metal Check Kerb

Install a treated 25mm x 50mm timber batten to form water check and install the membrane with bonding adhesive.

Ensure the membrane is tightly adhered with no bridging or voids, and extends a minimum of 50mm down the outside face of the roof. Install Plastisol check kerbs with fasteners at 500mm centres, using butt straps to link the adjoining trims together.

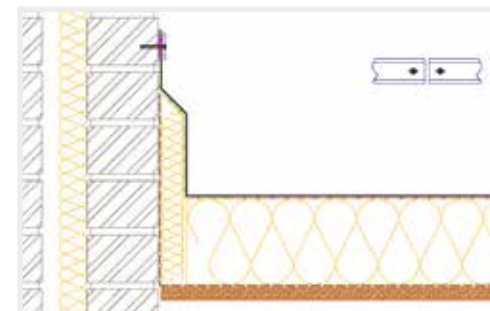


Wall Trims

Before installation of the membrane, cut a chase a minimum of 150mm above the flat of the roof which is at least 25mm deep. Adhere the membrane to the upstand with Bonding Adhesive.

Apply a small amount of lap sealant into the chase and press the wall trim into the chase. Secure with RB fasteners at minimum 500mm centres and overlap adjoining trim edges by a minimum of 150mm.

Cut the top 25mm edge to form corners, bend to create the desired angle. Use Lap Sealant to seal the trim into the chase.

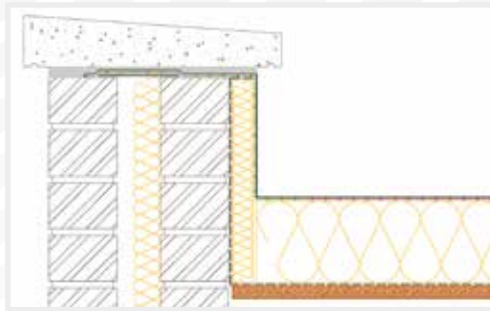


Termination Bars

A compression seal can be installed to suitable substrates to terminate the membrane if a chase cannot be cut. Remove the fleece backing from the top 25mm of the reverse of the membrane and bond the membrane to the wall surface.

Where the fleece was removed apply an 11mm bead of Water Cut Off mastic to the top edge. Position the termination bar on top of the membrane, compressing the Water Cut Off mastic. Secure at 150mm centres using washered fasteners.

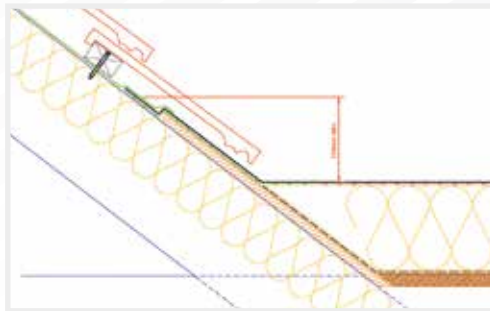
Complete the seal with a bead of Lap Sealant along the top edge where the termination bar meets the wall.



Coping Stone Parapet

Install the membrane, extending to the outer wall using Bonding Adhesive. Remove the fleece and apply an 11mm bead of Water Cut Off mastic below the outside edge of membrane and compress.

Apply mortar evenly onto the membrane and outer wall. Lay suitable coping stones, making sure they have an adequate amount of overhang and drip channels.



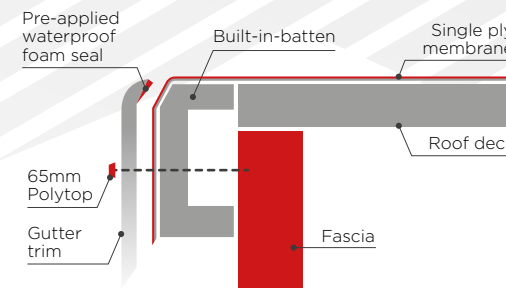
Under a Pitched Roof

The top edge of the membrane must extend a minimum of 150mm above the flat height of the roof.

Adhere the membrane up the lay board with Bonding Adhesive. Ensure the pitched roof underlay adequately extends over the waterproofing membrane.

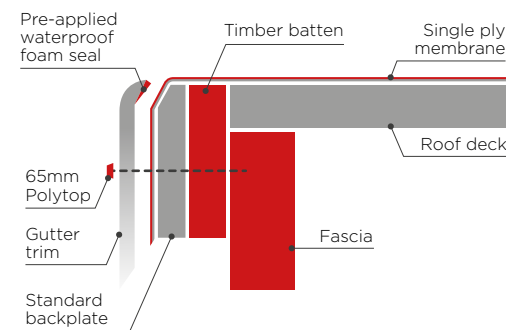


Gutter trim - built-in-batten



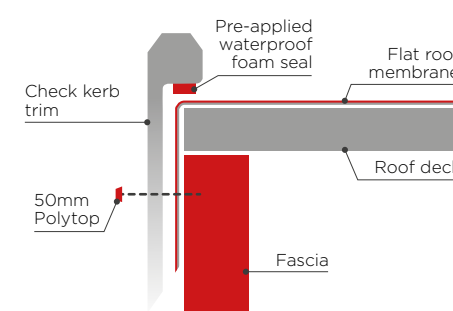
- No extra purchasing of batten or struggling with batten
- Complete rot free roof perimeter

Gutter trim - standard back plate



- Alternative option, back plate fits to existing timber batten
- Ready to fit complete with water seal
- Pre-drilled for fast, accurate fitting

Check kerb - edge trim



- Labour saving, no fixing of perimeter timber or forming membrane over batten
- Solid core trim, complete with all corners and joints
- A simple position, compression and fix install

FIX-R PVC Perimeter Trims

Gutter System

This is available in two options, 'standard' and 'built-in batten' back plate. The standard requires a timber batten to be installed first, then the back plate fixed to it. The 'built-in-batten' doesn't require the extra timber batten. In both instances ensure there is a firm substrate to affix the trim.

- 1 Fix the 25mm x 40mm back plate to the fascia at the edge of the roof.
- 2 Allow a minimum of 50mm FIX-R EPDM Membrane extended over the back plate.
- 3 Position the front plate with foam seal to clamp the membrane between the two sections and fully fix into place with the supplied fixings.
- 4 Between lengths, allow a 2.5mm expansion gap for each trim.
- 5 All corners are adhered or fastened in place with polypins. Fasten to one trim to prevent damage when expansion and contraction of the trim components occurs.

Note: In areas of high wind, exposed areas and high buildings, additional fixings between pre-drilled holes is recommended.

FIX-R Check Kerb System

Used to create upstand and edge trim in one go. The FIX-R Check Kerb Trims have a pre-applied water seal for fast, tidy installations.

- 1 Lay the membrane and allow a minimum of 75mm over roof edge.
- 2 Ensure the membrane is clean; position the edge trim and firmly push down to compress the water seal between 30-50%. Do not over-compress.
- 3 Fix the trim into place using the supplied PolyTop fixings.
- 4 Between lengths, allow a 2.5mm expansion gap for each trim.
- 5 All corners are adhered or fastened in place with polypins. Fasten to one trim to prevent damage when expansion and contraction of the trim components occurs.

Note: If a secure fixing cannot be achieved, a timber fixer should be fitted to the vertical edge of the roof.

In areas of high wind, exposed areas and high buildings, additional fixings between pre-drilled holes is recommended.