



  
**Danelaw**<sup>®</sup>

# **DRY FIX PRODUCTS FOR TILE AND SLATE ROOFS**

**PRODUCT GUIDE**

Traditional mortar bedding is quickly becoming a thing of the past, with dry-fix solutions replacing it as the norm for multiple applications above the roofline from ridge and hip verge systems through to valley trough installation.

The move towards dry-fix products has been accelerated by the large percentage of claims in relation to mortar and its potential to fail, even on new buildings. Mortar has a limited lifespan and requires maintenance as it will deteriorate in time through natural ageing and weathering. It is also susceptible to cracking because of shrinking and the natural movement in the building structure. This can leave the ridge, hip tiles and verge tiles vulnerable to the elements, which can then become damaged by high winds causing water ingress and costly internal damage.

**WHAT IS DRY-FIX AND WHY ADOPT IT?**

Dry-fix roofing is the method of mechanically fixing products and systems to the roof perimeter without the use of sand and cement mortar. The many advantages of dry-fix roofing highlight why it has been well established in Scotland for some time and is now leading the way throughout the rest of the UK and Ireland.

- Simple and quick to install
- Can be installed in any weather
- Mechanically fixed for secure installation
- Compliant with BS 5534 and NHBC requirements

**BS 5534**



BS 5534:2014+A1:2018 *Slating and tiling for pitched roofs and vertical cladding – code of practice* has been revised in recent times to account for the more extreme weather conditions now being experienced in the UK and better alignment of European Standards.

The Standard has been developed in order to meet new regulatory requirements and design standards as part of changes to UK Building Regulations, European Eurocodes and industry Technical Standards. Whilst installing to the British Standard is not a requirement by law, it can be included with a specification and held up in a court if necessary.

The Code of Practice focuses on three main areas of changes, relating to;

- Fixing
- Mortar bedding
- Underlays

Focusing on mortar bedding, the Standard states that mortar alone cannot be used and is insufficient to fix tiles and other fittings. Simply, this means that if mortar is used then additional components are needed to create a mechanical fix.

**BS 8612**

Many of the elements contained within this Standard are methods of assessment of level of performance rather than pass/fail criteria.

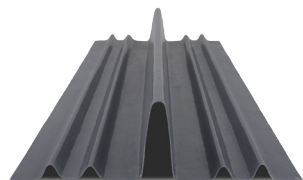
The Standard sets a minimum requirement for material quality and all of Hambleside Danelaw's relevant products, including Dry Fix Ridge and Hip and Verge Systems have been tested to demonstrate compliance with the BS 8612, performing very well under the various assessment criteria contained within the Standard.

The Danelaw range of Interlocking Dry Verge Systems, the HD IDV, HD TIDV and HD IPTDV, are all tested to ensure that gable wall staining does not occur.



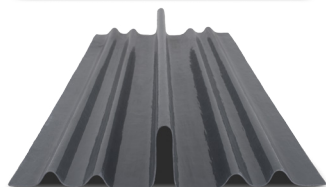
## DRY FIX VALLEY TROUGHS

Creates a close cut appearance for new build and refurbishment work. Quick to install and does not require the need for any counter battens and special eaves pieces. Suitable for roof pitch differentials of up to 20°.



**HDL DVT/ 1 (L 3000mm)**  
**HDL DVT/2 (L 2400mm)**

Central Upstand: 105mm  
Suitable for profiled tile roofs.



**HDL DVLPT/1 (L 3000mm)**  
**HDL DVLPT/2 (L 2400mm)**

Central Upstand: 80mm  
Suitable for plain tile roofs.



**HDL DVS/1 (L 3000mm)**  
**HDL DVS/2 (L 2400mm)**

Central Upstand: 55mm  
Suitable for slate roofs.

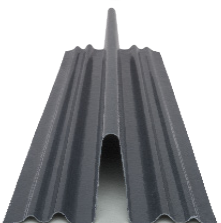
## DRY FIX BONDING GUTTERS®

Creates a weathertight joint between dissimilar roof coverings on semi-detached or terraced properties. Manufactured from GRP, they are lightweight and a cost effective alternative to lead.



**HDL DBG1**

For slates, flat and plain tile roofs.



**HDL DBG2**

For profiled tile roofs, or where there may be a greater difference in height of the roof coverings on either side.

## CON6+ DRY FIX VENTILATED RIDGE AND HIP SYSTEM

HD CON6



A universal ventilated dry fix ridge and hip system that can be fitted with no special tools required. The patented jointing gasket adds flexibility and is also trimmable. System is suitable for different roof pitches.

## CLAY6+ DRY FIX VENTILATED RIDGE AND HIP SYSTEM

HD CLAY6+



This product has all the benefits of the CON6+ but features more fixings for baby ridge application.

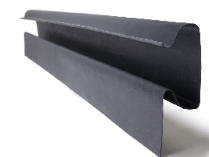
## CONTINUOUS SLATE VERGES

Manufactured from GRP and provide weather protection at roof verges.



**HDL DV6**

Ideal for refurbishment, designed to fit over an existing verge detail and face fix to barge board or brickwork.



**HDL DV8**

Suitable for new roofs suitable for under batten fixing. No expansion joints or jointing pieces required and quick and simple to install with no need for mortar.



**HDL DV7**

Ideal for refurbishment, designed to fix directly onto the sark board surface where battens are not being used, or where an over batten fix is required.



**HDL DV9**

Suitable for sark board refurbishment projects. Designed to fix over existing verge detail and to be face fixed over the verge onto the gable.

## DRY FIX VALLEY TROUGH APPLICATION



## DRY FIX BONDING GUTTER APPLICATION



## CONTINUOUS SLATE VERGE APPLICATION



## DRY VERGE SYSTEMS

Designed to prevent weather ingress and reliance on mortar at the roof edge.



HD IDV

Compatible with most concrete tile profiles and suitable for new build and refurbishment projects.



HD TIDV

Compatible with most thin leading edge tile types and suitable for new build and refurbishment projects.



HD IPTDV

Compatible with all interlocking plain tile types and suitable for new build and refurbishment projects.

## INTERLOCKING DRY VERGE APPLICATION



## DRY VERGE SYSTEM COMPONENTS



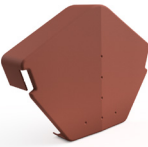
Angle Ridge Cap  
HD IDV/AR



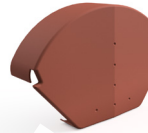
Half Round Ridge Cap  
HD IDV/HR



Starter Unit  
HD IDV/ST



Angle Ridge Cap  
HD IPTDV/AR



Half Round Ridge Cap  
HD IPTDV/HR



Starter Unit  
HD IPTDV/ST

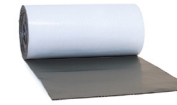


Batten End Clip  
HD IDV/BC

### Batten End Clips Note:

It is recommended to use a batten end clip for a secure fix. It is **required** if the verge unit is used as a tile fixing in compliance with BS 8612.

## RELATED PRODUCTS

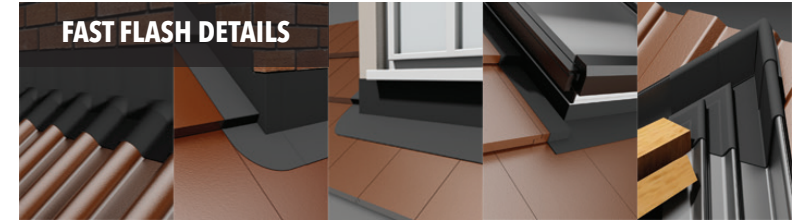


**Fast Flash®** A secure flashing solution. The product can be installed on roof with a minimum 5° pitch and is compatible with most widely used roof coverings. It is easy to install with a fully adhesive reverse. No specialised tools required.



- Lead replacement
- Usable off cuts - minimal waste
- Great stretching ability, can be increased by 60% in length and 20% in width

### FAST FLASH DETAILS



## ROOF UNDERLAYS

A low resistance breathable roof underlay range. Intended for use on pitched roofs as a secondary barrier installed beneath tiles and slates.



**Roofing Underlay LR120**  
High quality roof underlay Integral tape version available and in width options 1.0m or 1.5m in 50m lengths.



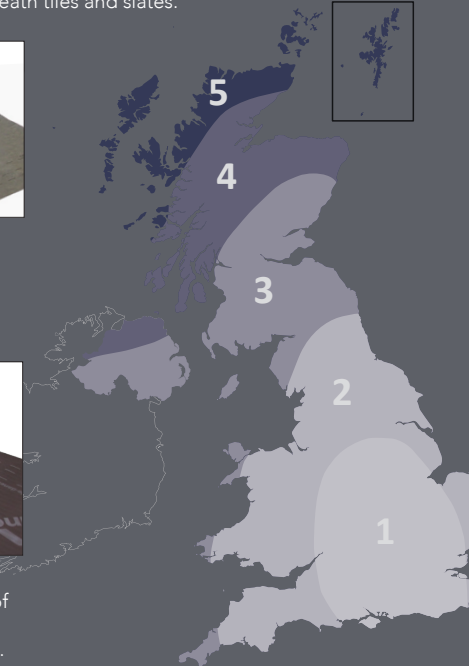
**Roofing Underlay LR135**  
High quality medium weight roof underlay. In in width options 1.0m or 1.5m in 50m lengths.



**Roofing Underlay LR150**  
High quality medium roof underlay Integral tape version available and in width options 1.0m or 1.5m in 50m lengths.



**Roofing Underlay LR180**  
Heavier premium weight roof underlay. In in width options 1.0m or 1.5m in 50m lengths.



PRODUCTS	250mm batten gauge with lap restraining batten	345mm batten gauge with lap restraining batten	345mm batten gauge with integral tape
DANELAW LR120	Zones 1 to 5	Zones 1 to 3	-
DANELAW LR120TT	-	-	Zones 1 to 5
DANELAW LR135	Zones 1 to 5	Zones 1 to 2	-
DANELAW LR150	Zones 1 to 5	Zones 1 to 3	-
DANELAW LR150TT	-	-	Zones 1 to 5
DANELAW LR180	Zones 1 to 5	Zones 1 to 4	-



Installation videos available to view on our website of the CON6+, Interlocking Dry Verge Systems and Dry Fix Valley Troughs.

## Hambleside Danelaw Building Products



Hambleside Danelaw Limited  
Long March, Daventry,  
Northamptonshire  
NN11 4NR

Tel: +44 (0)1327 701910

Fax: +44 (0)1327 701919

Email: [sales@hambleside-danelaw.co.uk](mailto:sales@hambleside-danelaw.co.uk)

Web: [www.hambleside-danelaw.co.uk](http://www.hambleside-danelaw.co.uk)

Hambleside Danelaw Ltd has a continuing product development programme. With any updates or changes to these products, we will ensure that is communicated to our customers and stakeholders.

In accordance with our policy for continuous improvement we reserve the right, should the need to arise, to amend product specifications without prior notice. Terms and conditions of sales are available upon request.

All content is as recommended by Hambleside Danelaw Ltd. Intellectual property of Hambleside Danelaw Ltd, permission required to reproduce all content of this publication.